



Studio Apartment

Nitika Bajaj

Acknowledgement



The project's success is substantially dependent on the support and direction of several other people, in addition to my efforts.

I take this opportunity to commend everyone who has been instrumental in the successful completion of this project.

I would like to express my sincerest gratitude to my teacher, Mrs. Jaspreet Kaur for her guidance and supervision throughout the journey, as well as our institution, the Academy of Applied Arts, for providing me with an insightful opportunity to design and work on the project "Studio Apartment".

The project helped me conduct extensive research and has overall been a great learning experience for me.

Contents

0 1

Client Description

0 2

Inspiration Board

0 3

Bubble Diagram

0 4

Layout Plans

0 5

Sectional Elevations

0 6

Furniture and
Material Boards

Client Description

A young woman in her mid-twenties who performs and teaches ballet dance.

As an artist, she dreams of having a dance studio in her house where she can practice her moves as well as pass them on to passionate learners.

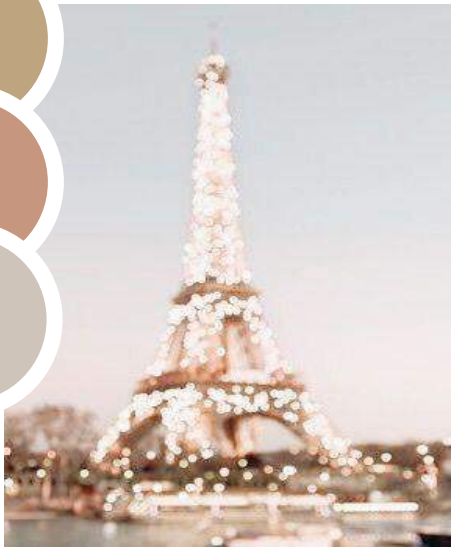
She has a simple yet elegant taste and envisions her apartment to have modern-classic interiors with pastel and neutral color schemes.

Ballet dancers, in particular, are renowned for their grace and ability to execute flowing moves with a strong sense of balance and symmetry while donning beautiful and intricate costumes.

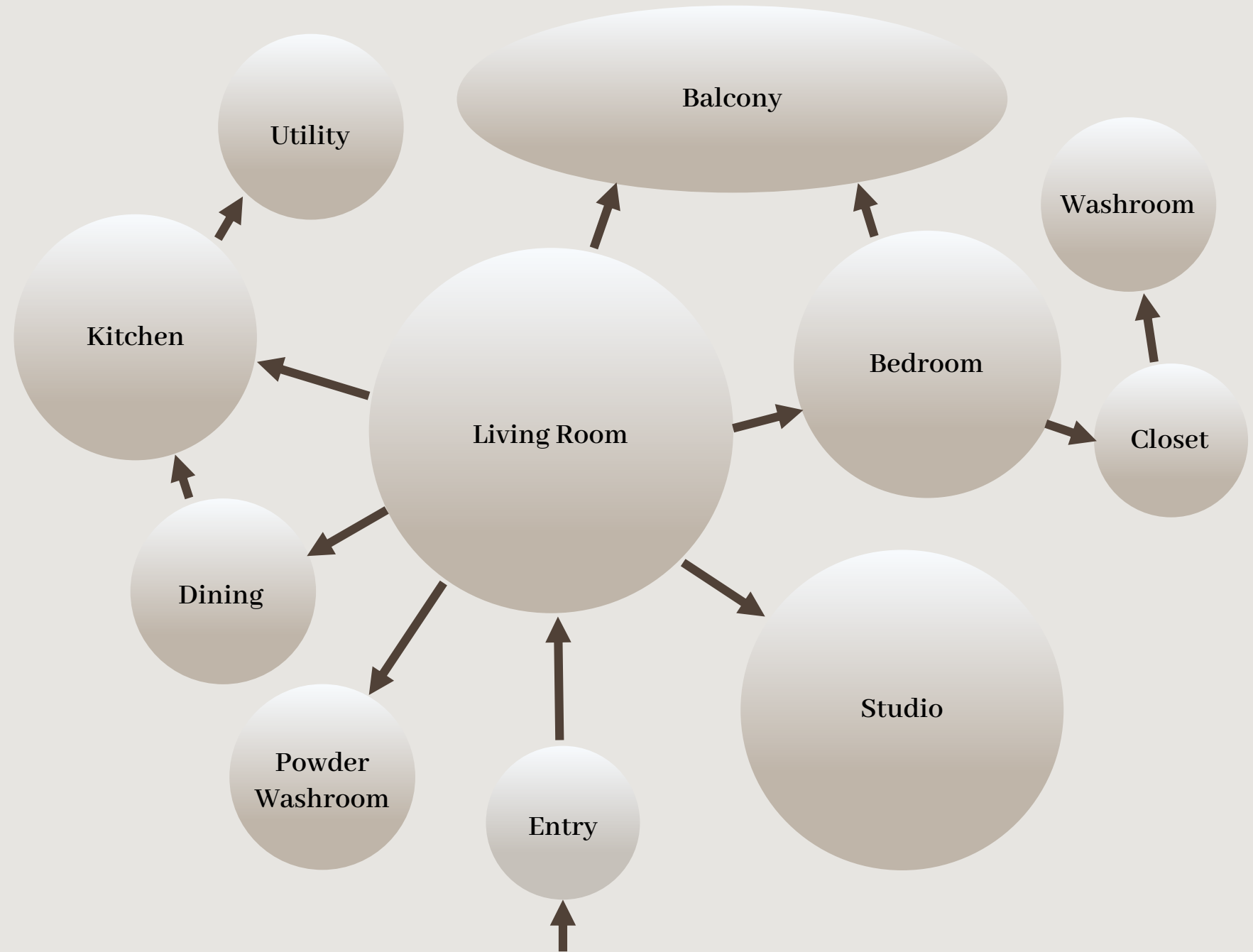
As a designer, I would like to incorporate certain aspects of her line of work into the layout and decor of the apartment in order for her personal space to truly reflect both her personality and her profession.

The key features would include furniture curves, arches, wall moldings, mirrors, and special attention to details.

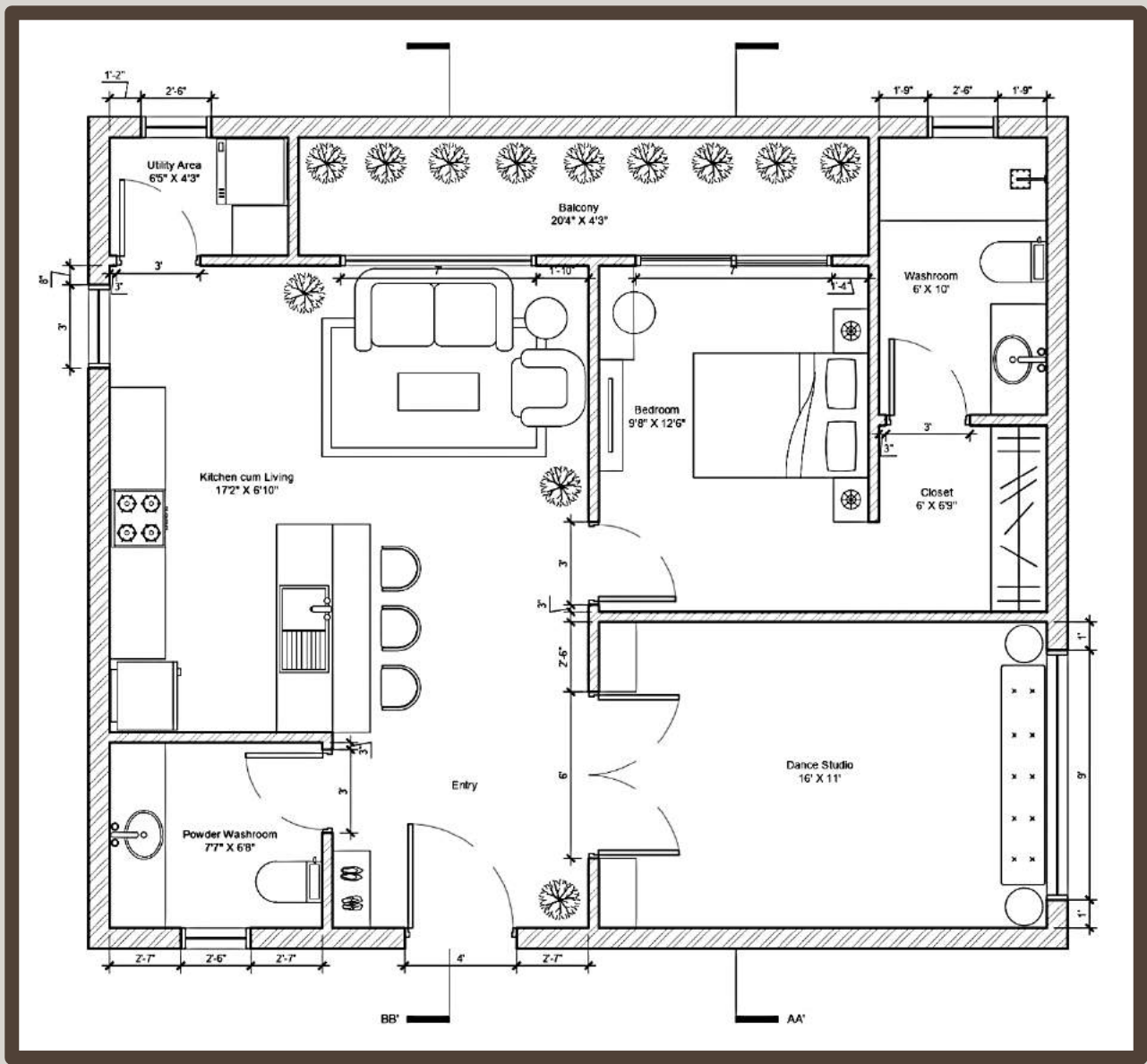




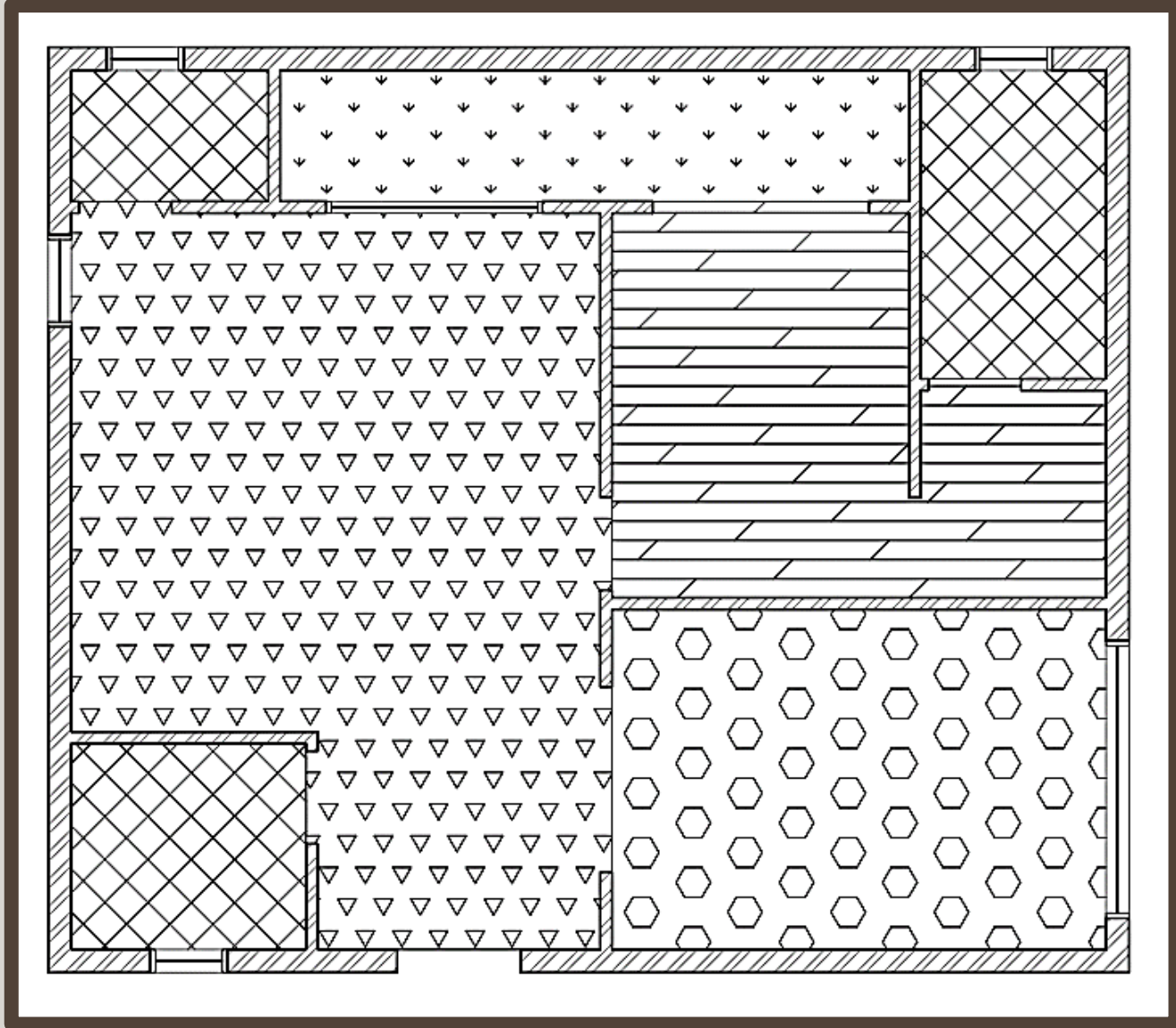
Bubble Diagram



Layout

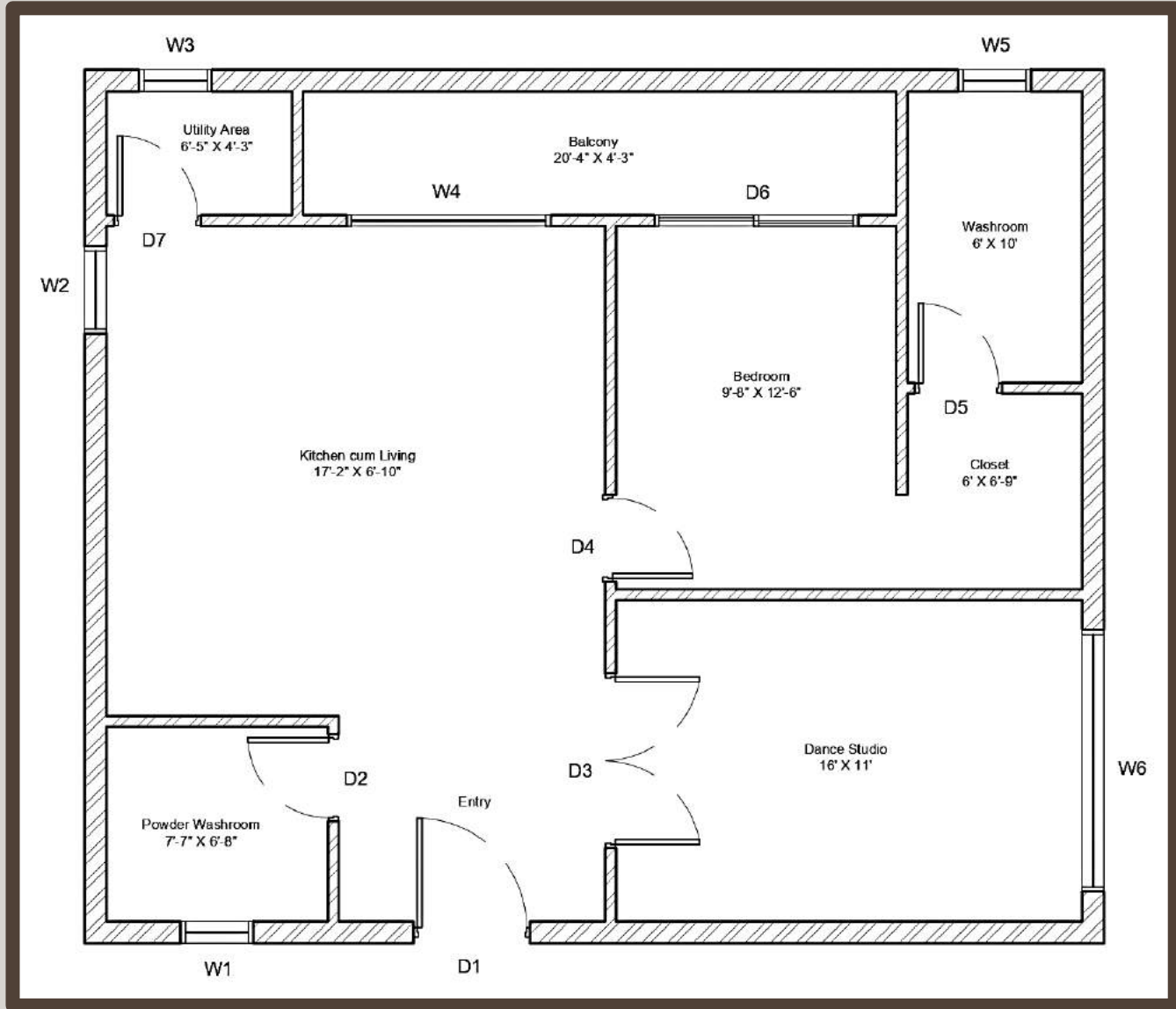


Flooring Plan



SYMBOL	NAME	AREA	SIZE
	Marble Flooring	Kitchen and Living	4" X 2"
	Artificial Grass	Balcony	20" X 4"
	Ceramic Tiles	Washroom and Utility	2" X 2"
	Wooden Flooring	Studio	8" X 3"
	Marble Flooring	Bedroom and Closet	4" X 2"

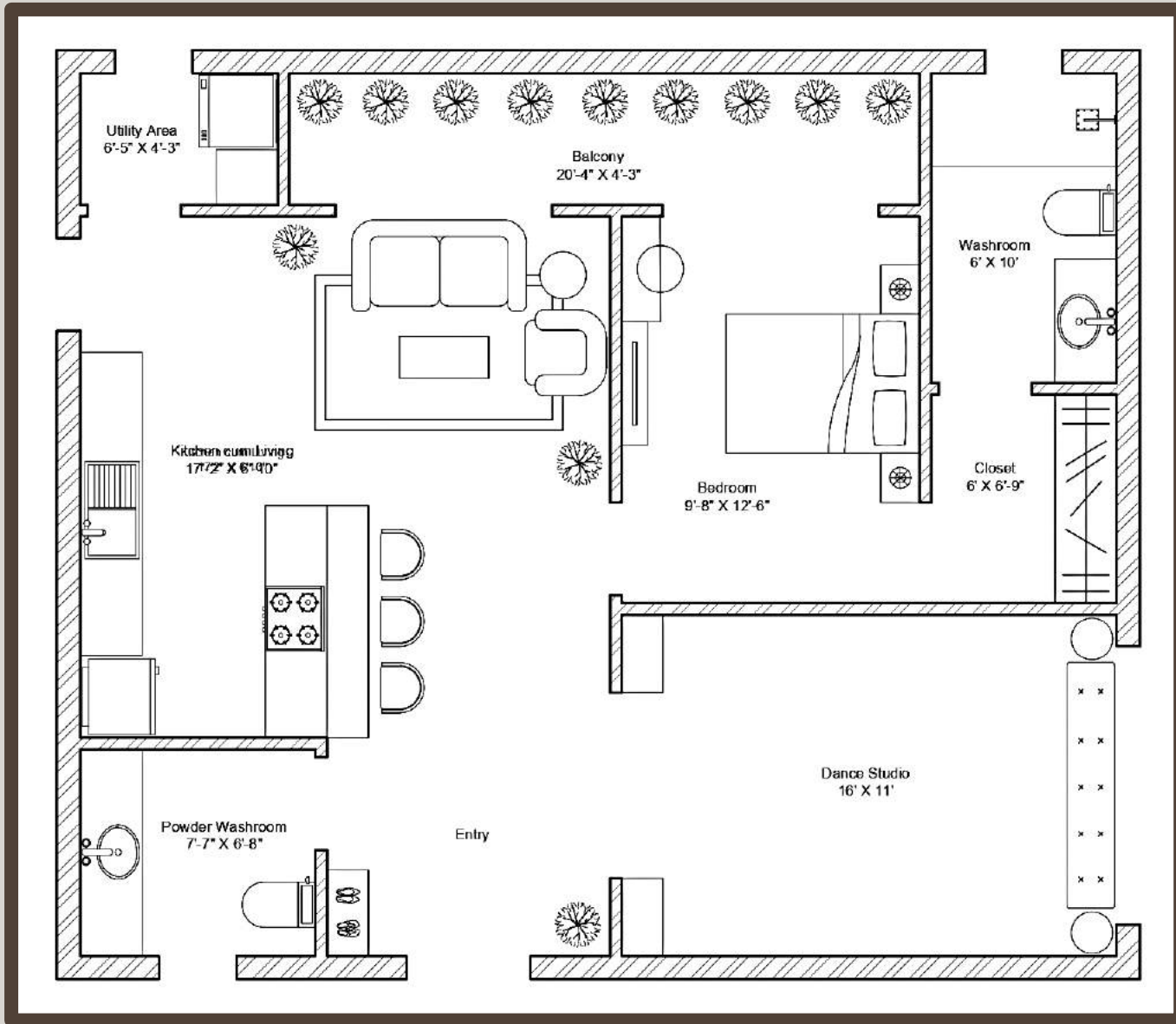
Doors and Windows Schedule



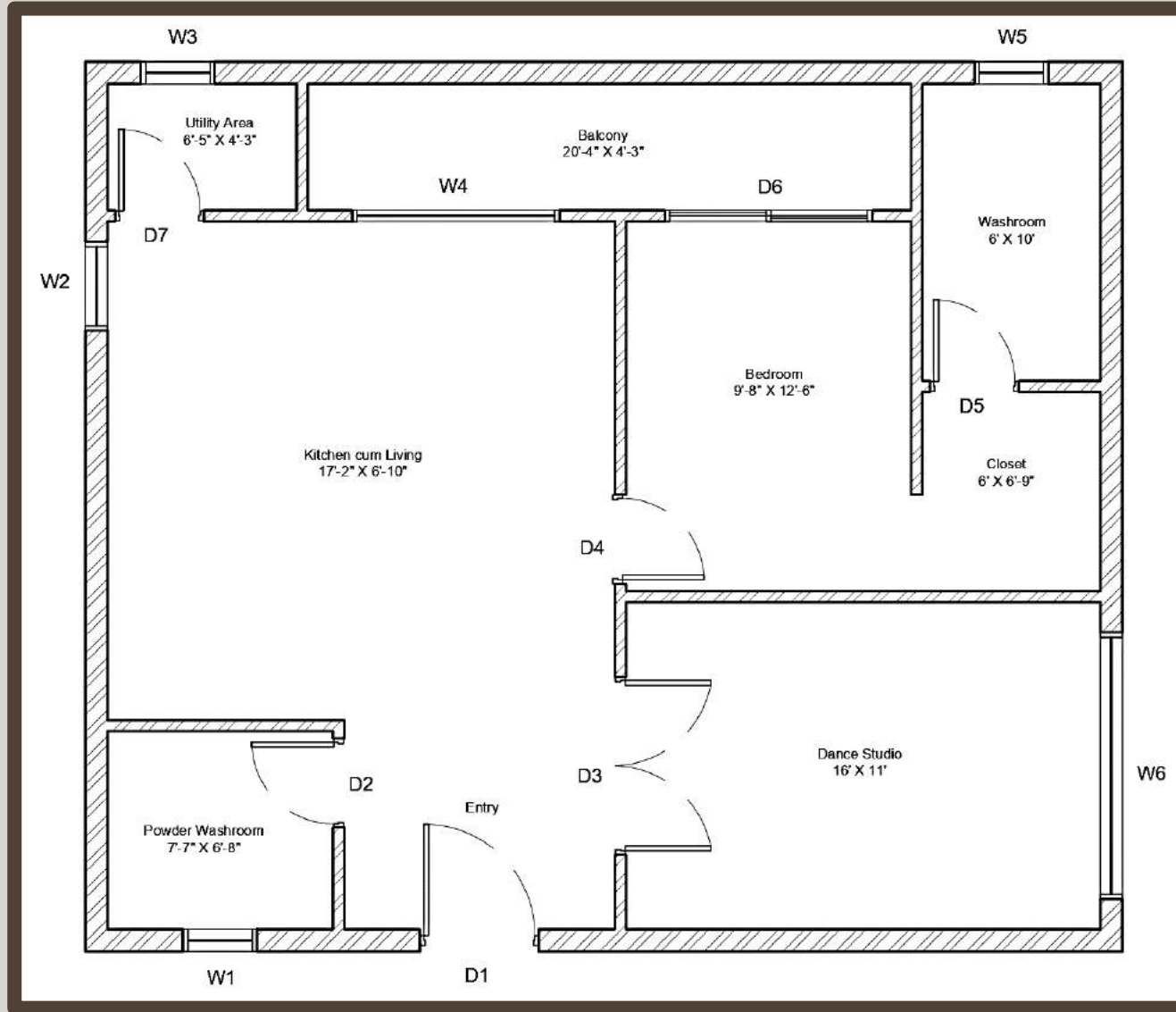
DOOR SCHEDULE						
TAG	AREA	SIZE		LINTEL	TYPE OF DOOR	MATERIAL USED
		HEIGHT	WIDTH			
D1	Main Door	8'	4'	8'	Flush Door	Wood
D2	Powder Washroom	8'	3'	7'	Flush Door	Wood
D3	Studio	8'	6'	7'	Double Door	Wood / Glass
D4	Bedroom	8'	3'	7'	Flush Door	Wood
D5	Washroom	8'	3'	7'	Flush Door	PVC
D6	Balcony	8'	7'	7'	Sliding Door	Aluminium / Glass
D7	Utility Area	8'	3'	7'	Flush Door	Wood

WINDOW SCHEDULE							
TAG	AREA	SIZE		LINTEL	SILL	TYPE OF WINDOW	MATERIAL USED
		HEIGHT	WIDTH				
W1	Powder Washroom	2'-3"	2'-6"	7"	4'-9"	Cottage Window	Aluminium / Glass
W2	Kitchen	4'	3'	7"	3"	Fixed Window	Aluminium / Glass
W3	Utility Area	2'-3"	2'-6"	7"	4'-9"	Casement Window	Aluminium / Glass
W4	Balcony	5'-6"	7'	7"	1'-6"	Fixed Window	Aluminium / Glass
W5	Washroom	2'-3"	2'-6"	7"	4'-9"	Cottage Window	Aluminium / Glass
W6	Studio	5'-6"	9'	7"	1'-6"	Arched Window	Aluminium / Glass

Furniture Plan



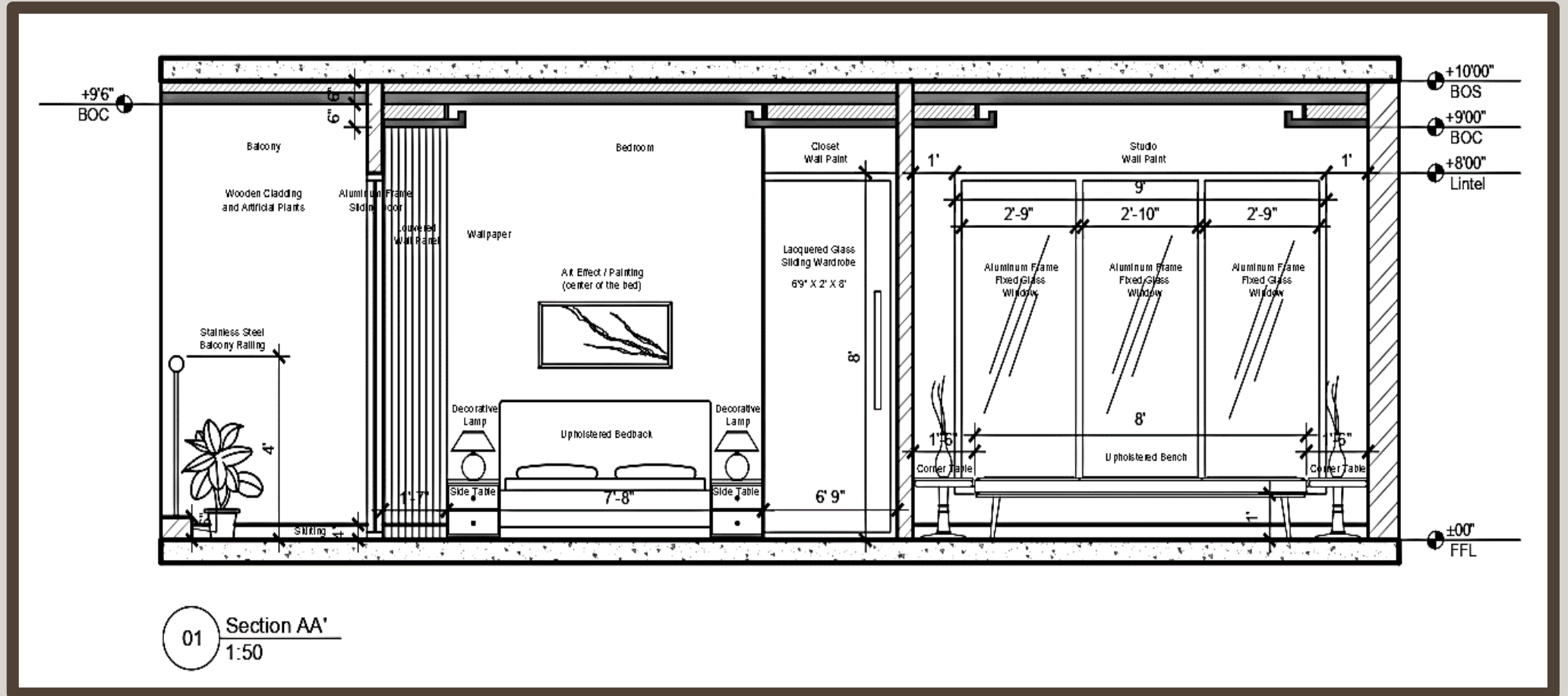
Ceiling Plan



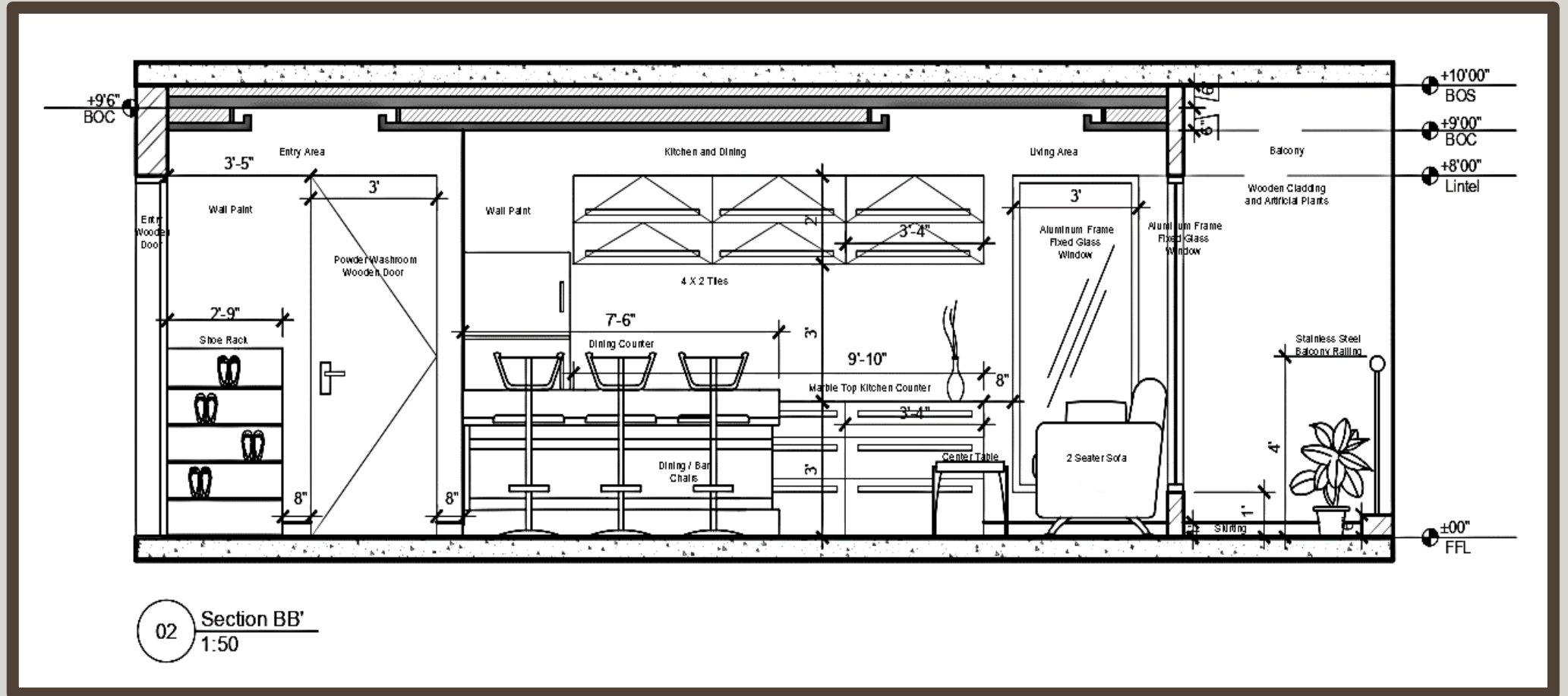
CEILING SCHEDULE

SYMBOL	SPECIFICATIONS
	Down Light
	Waterproof Light
	Outdoor Light
	Track Light
	LED Strip Light
	Pendant Light
	Ceiling Fan
	Chandelier
	False Ceiling

Elevation 1



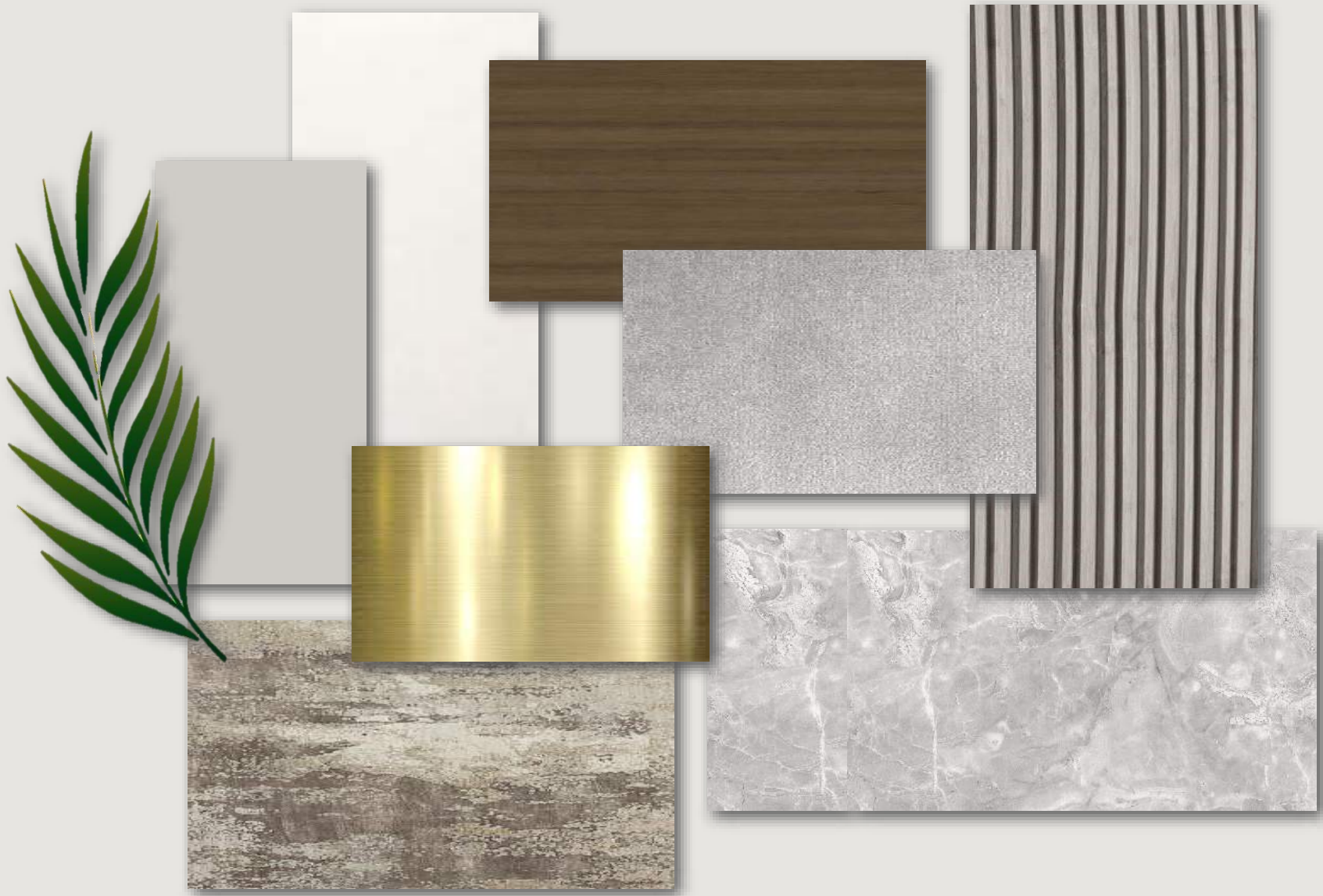
Elevation 2

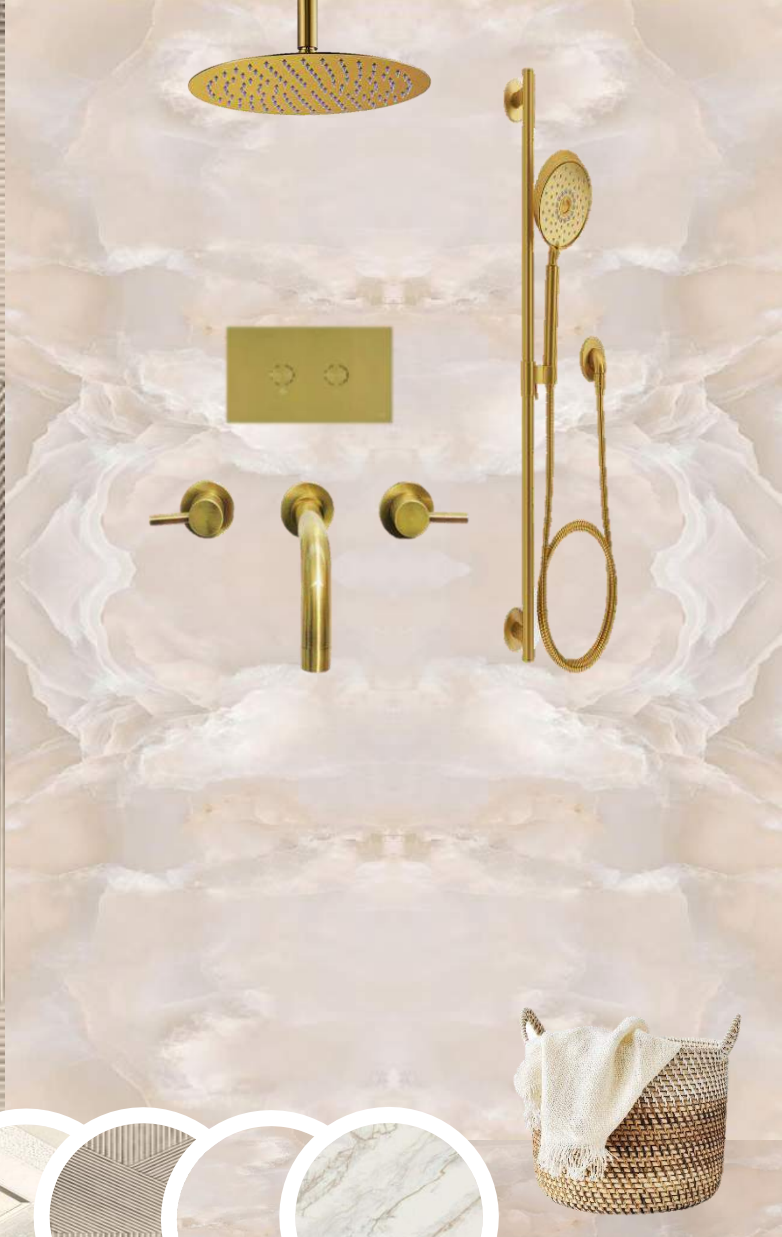




Bedroom

Bedroom





Bathroom



Bathroom





Ceiling Fan



Ballerina Pendant Lights



Golden Faucets



Bar Chairs

Raised Island Counter for Dining



Marble Slab

Neo-Classical Molded Cabinets



Kitchen And Dining

Marble Flooring



Kitchen And Dining



Metal and Glass
Double Door



Floral Ceiling
Chandelier



Aluminium and Glass
Fixed Windows



Decorative Shelf



Mirror Wall Design



Wooden
Supporting
Handle

Floor Length Mirror



Upholstered Bench



Wooden Flooring

Studio