

A circular wreath of various botanical illustrations surrounds a central white circle. The plants include green ferns, yellow flowers, red leaves, purple flowers, and green leaves with prominent veins. A horizontal line with a small green leaf in the center is positioned below the text.

INTERIOR STYLES

Submitted by:
Vinusha K
ID12010123VLP



Submitted to:
Mrs.Nimisha
Sharma



Topic:

According to you, what is today's design movement?

Make a PPT with key designers, characteristics and iconic designs of the times.





Style I feel is trending today:

Modern-Slow Design



Slow Design (Origin:2022)



KEY CHARACTERISTICS:

- Longevity over speed and
- Adaptable and lasting.
- Sustainable materials.
- Handmade elements that take time to be made.

GOALS:

- ❖ Positive well-being of individuals, environment, economy.
- ❖ Including local art in modern era.

More about slow design...

- Initially, proposed by Alastair Fuad Luke in 2004.
- Started during/after pandemic that brought the realisation that human interactions outdo technology.
- This movement highlights not only the finished product but the process behind it.

ALASTAIR FUAD LUKE



Urged designers to think about products other than those already existing in the market.

APPROACH: Slowly understands the space and design what are actually needed there.

MANIFESTO:

1. Reveal
2. Expand
3. Reflect
4. Engage
5. Participate
6. Evolve





“

We build less but,
we build better.

”



SLOW DESIGN

Human interactions
are more important
than technology

Time-taking design process
resulting in unique products

Answer to fast revolution sectors
like fashion and garment

Creating projects that bring
happiness and satisfaction

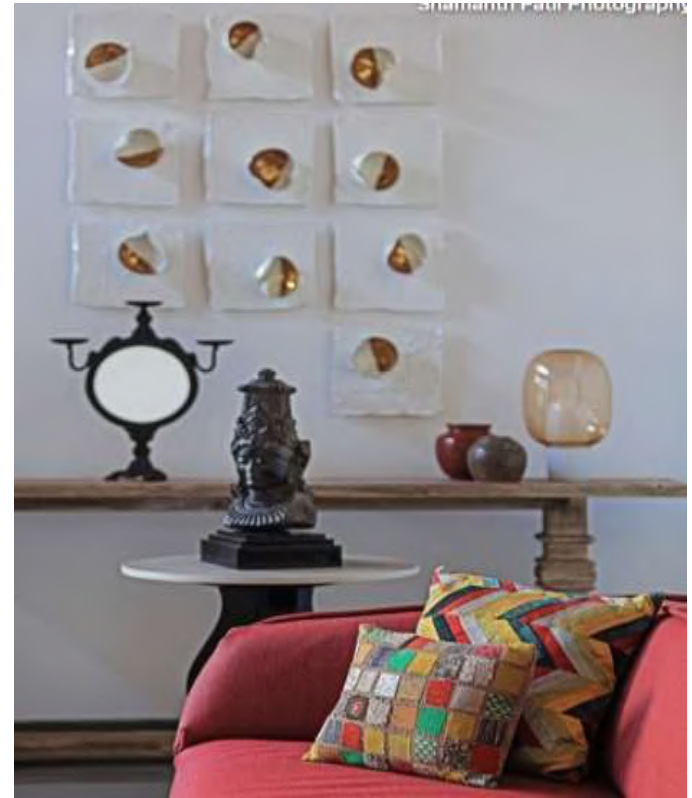
Sustainable and preserving culture

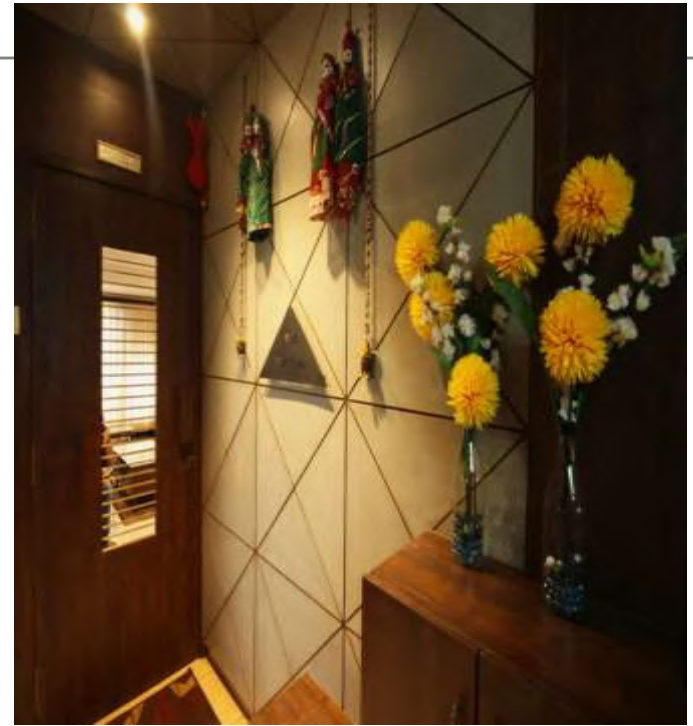
Modern Design

Key Characteristics:

- Clean lines and geometric shapes
- No arches and columns or ornamentation.
- Larger windows which optimizes natural light.
- Altogether a spacious and bright feeling.
- Fewer patterns/designs.
- Warm and earthy colours
- Use of industrial materials.

Few images that depict modern interior style with a touch of slow design:





Designers working on Slow design:



Manea Kella

We believe in thoughtful architecture and design that benefits society and is a force for social change.

“Surprise and reinvent”

Studio: Manea Kella, London



Cliffing contemporary ceramics
London, United Kingdom



Writing with oak
Surrey, London



Retrofit of an Edwardian house
London, United Kingdom



Designers working on Slow design:

Amy Baratta

I believe in the principals of holistic design, sustainability, eco- friendly materials, healthy living environment and natural healing elements.

Studio: Amy Baratta Design, New York

"Your home is the foundation where you draw strength and tranquility"



Designers working on Slow design:

Emma Stevenson

Emma's design philosophy is rooted in authenticity, in the belief that each client's true character must shine through their interior space.

Studio: Emma Stevenson Interiors,
London



*"Crafted to be lived in and loved,
embracing form and function in equal
measure"*

ASHIESH SHAH:

- He stirred change in the perception of design, nation-wide through his rather intriguing outlook on Indian minimalism and what it entails.
- He always tries finding a semblance between art, craftsmanship and design.
- **Design Firm:** Ashiesh Shah Architecture + Design
- His rooted upbringing and passion for Indian craftsmanship has resulted in a composition of inventiveness through Atelier Ashiesh Shah, a collaborative extension of his design studio, born from a vision to blur the boundaries between art and design.
- Empowering the ‘**karigar**’, The Atelier aims to work alongside award-winning master craftsmen from all over the country to create design objects honoring artisanship layered with a contemporary flair.



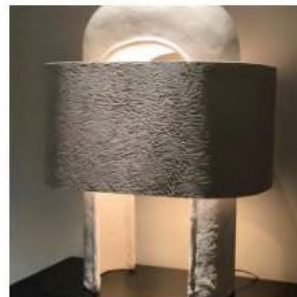
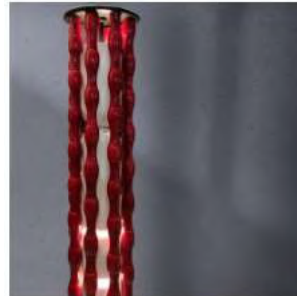
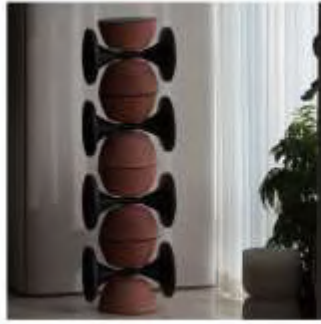
Channapatna Lights:

- He researched on the channapatna lights with the help of a craftswoman NOOR SALMA from Karnataka. He took the basic concept of channapatna products and made it even more aesthetic.

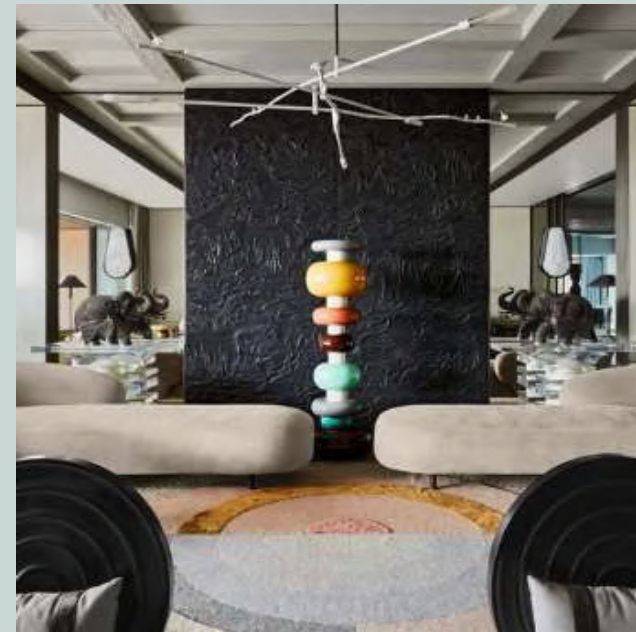


Channapatna Lights:





Naga Chair
Made of wabi-wabi
material; soft metal



Famous elements of slow design in India:



ANTIQUES

HAND WOVEN BASKETS



BLOCK PRINTING



TAPESTRIES



TRIBAL ART

WOOD CARVINGS



CERAMICS



Thank you!

