



**baxter**  
MADE IN ITALY

# HALO

PROJECT 1

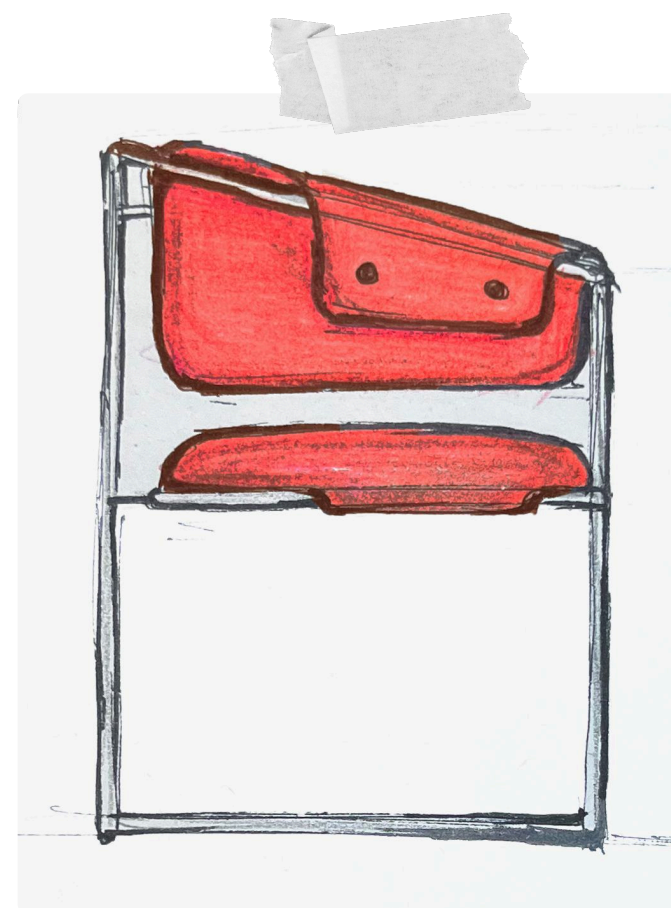
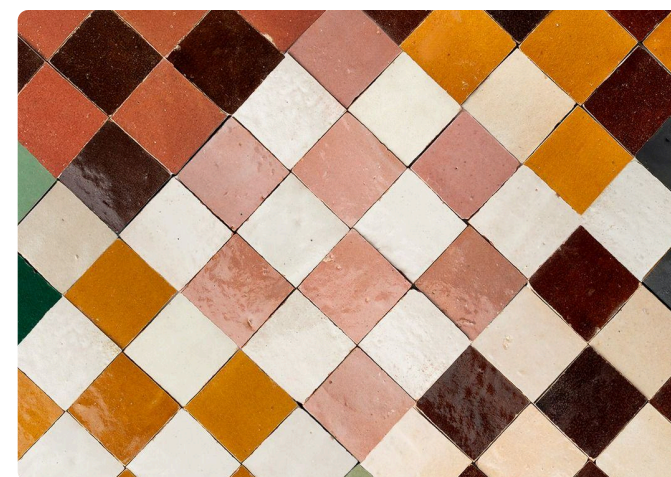
# Picasso's Cubism

Around 1907, Cubism transformed the understanding of form and space by **fracturing objects into geometric planes and presenting multiple perspectives at once.**

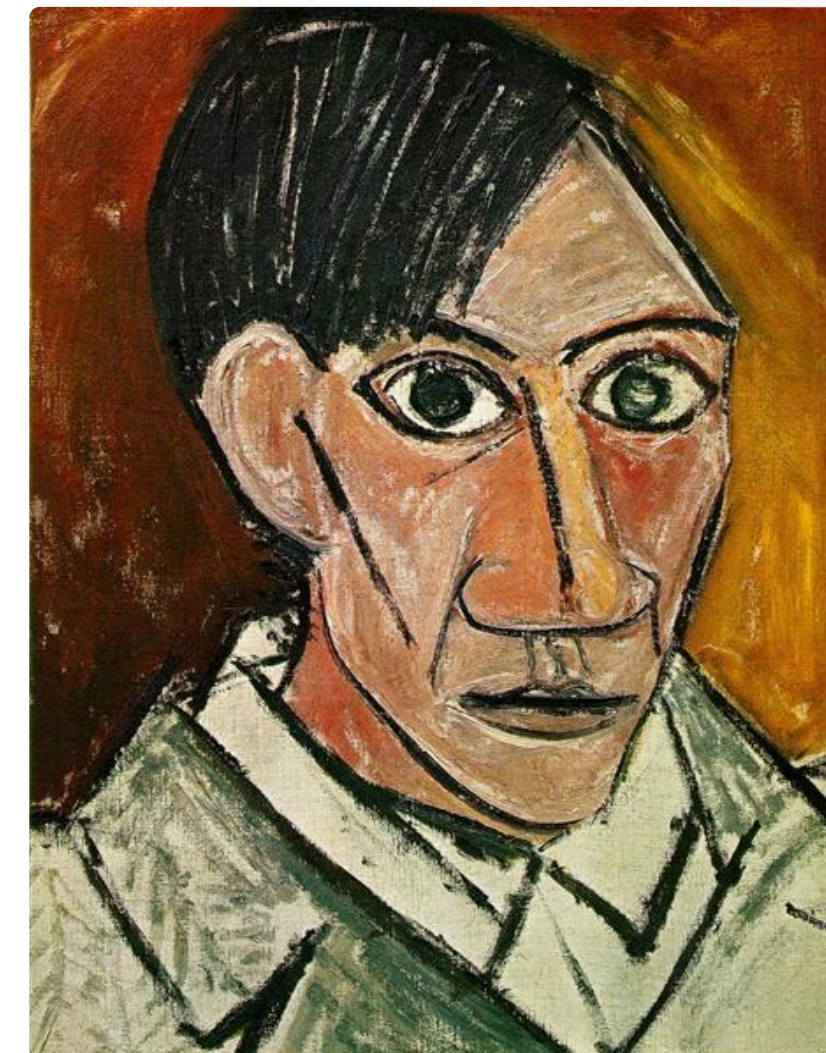
These foundational ideas became the inspiration for this chair's design.



Baxter's Gemma Chair



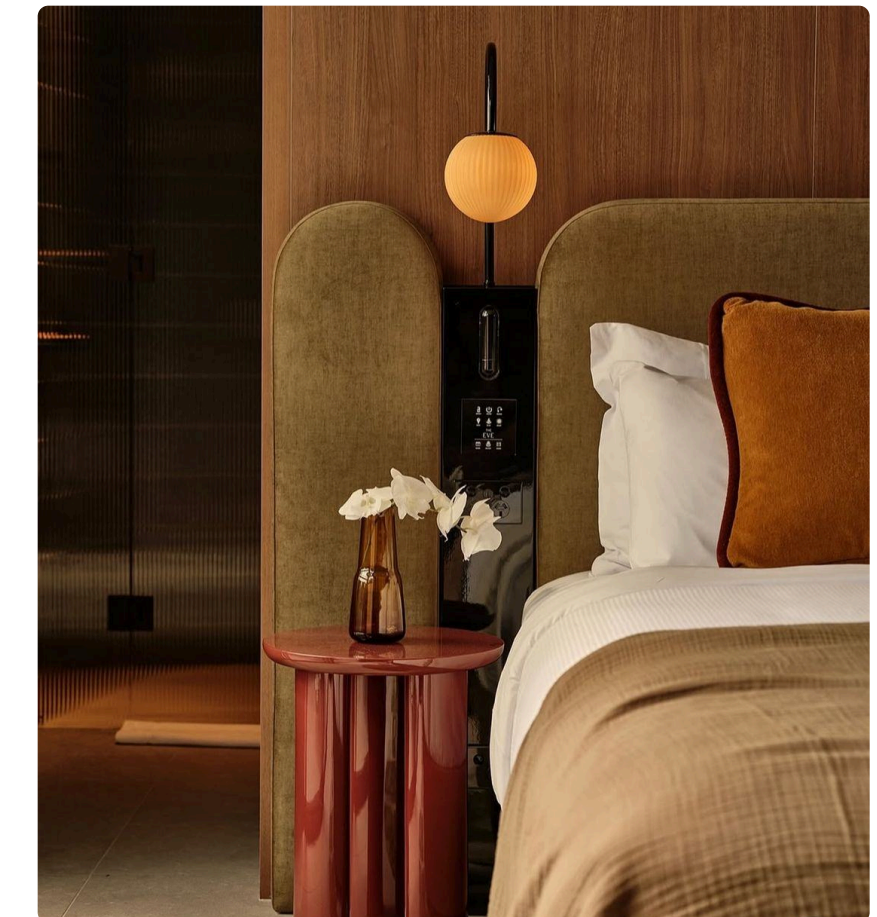
Self Portrait, Picasso, 1907



Baxter's Materials (Left to Right):  
Polish Carmine, Toffee, Nabuck Charcoal, Sage

## Geometry & Earthy Tones

Aimed to combine **Cubism's use of basic shapes** with a **warm, expressive colour palette**, as seen in both early Cubist works and mid-century interiors



## Premium Materials

Rooted in **Baxter's iconic leatherwork** and elevated with metal accents that echo the sophistication of mid-century style

## Leather upholstery

1.6 mm thick full-grain cowhides, dyed using pure aniline

## Stainless Steel tubes

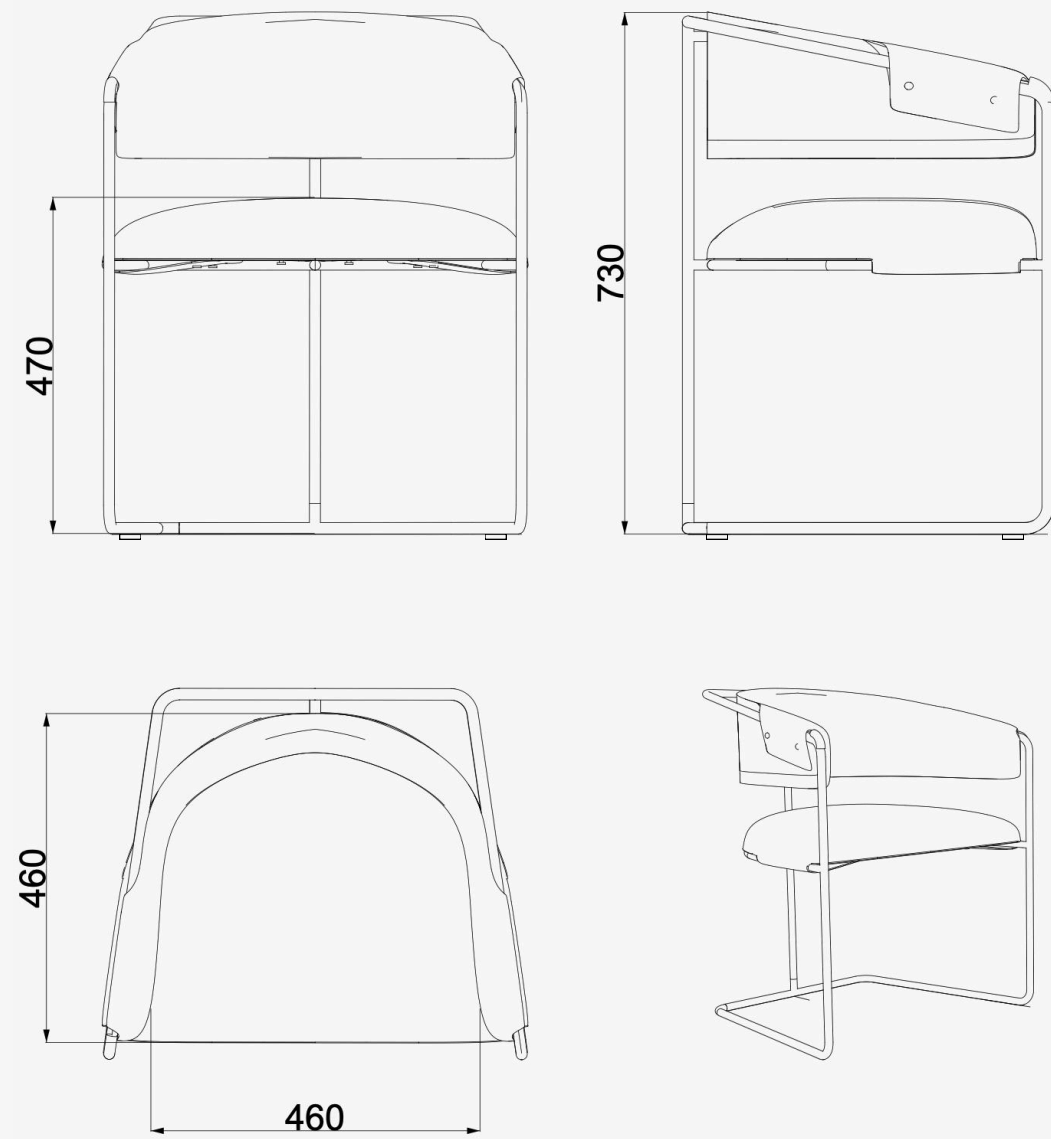
304 stainless steel tube, Ø16 mm, mirror polish PVD coat



[Rhino & Keyshot Renders]

## Comfortable, yet structural

Its ergonomic backrest and curved seat balance comfort and structure, making it ideal for dining, cafés, and workplaces

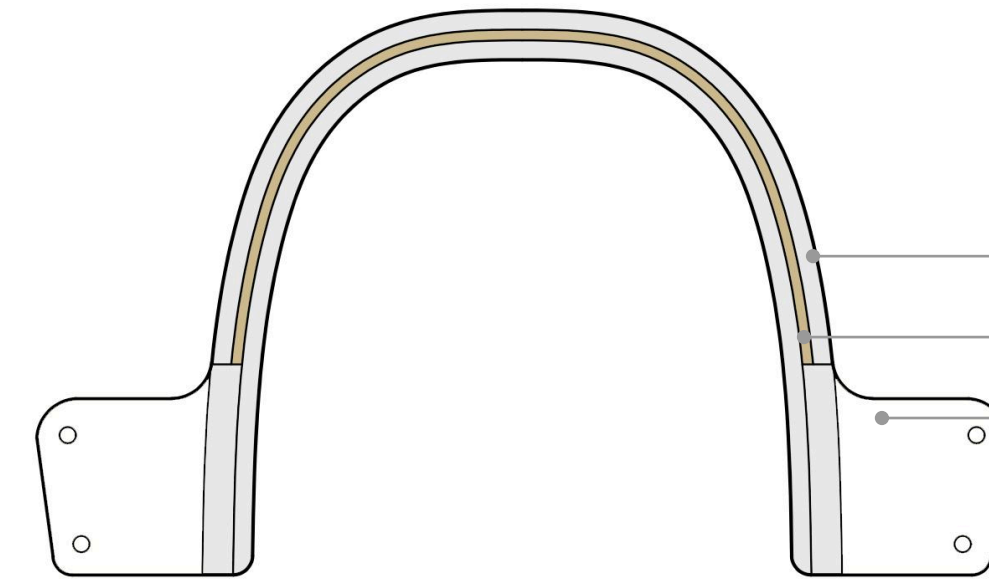


[Gemini Renders]

## Designed for **disassembly**

**Zippered upholstery** replaces adhesive in the backrest and seat cushion, allowing components to be **easily separated and recycled**

**Clip-on system** allows quick part removal for maintenance or replacement



### *Backrest*

Memory foam ( $\geq 38 \text{ kg/m}^3$ )

Bent Plywood sheet (12mm)

Leather

*Sectional Plan*



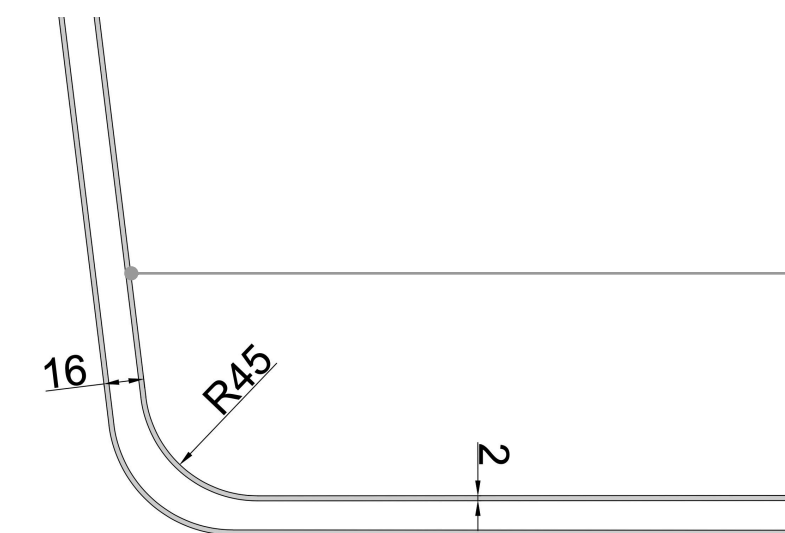
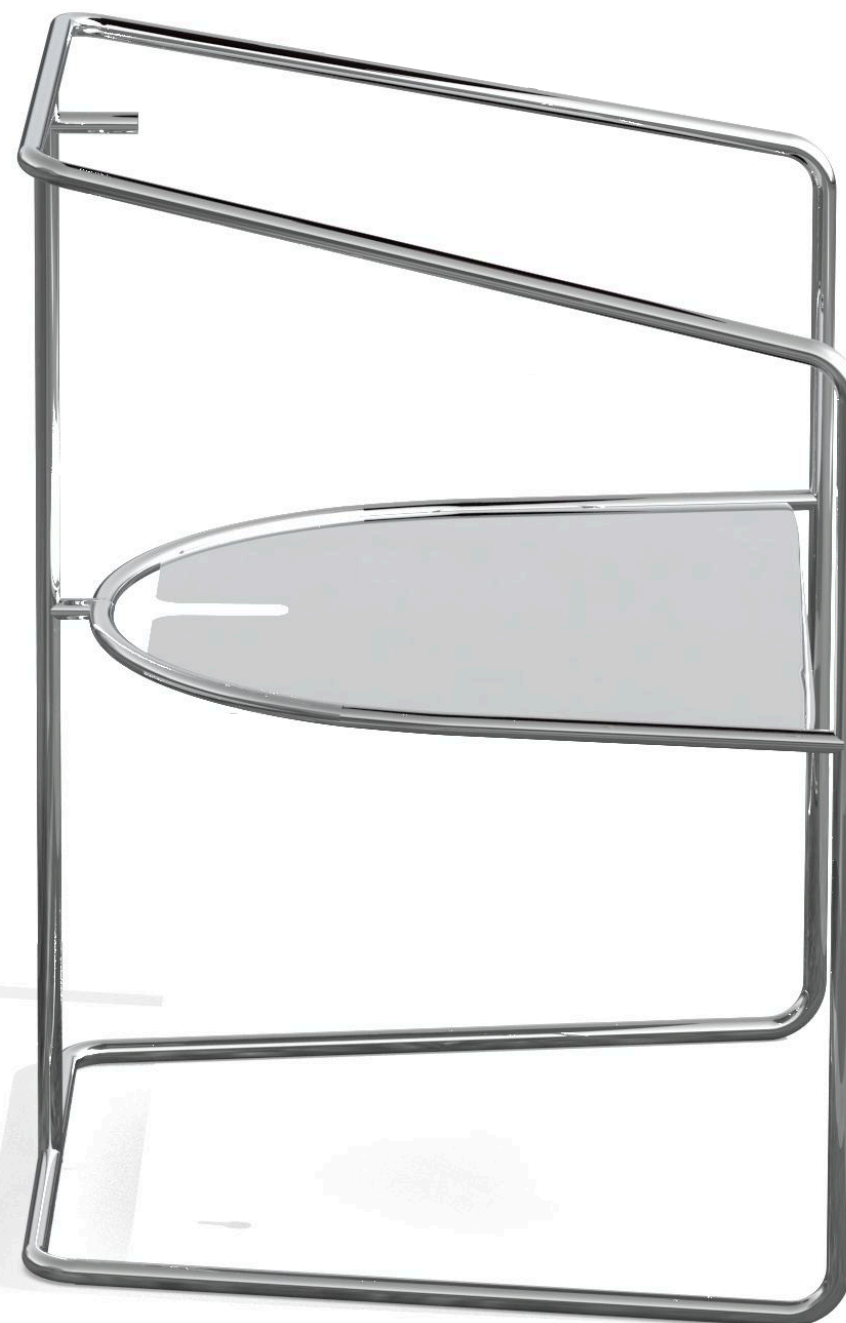
### *Seat Cushion*

Memory foam ( $\geq 38 \text{ kg/m}^3$ )

High-density foam ( $\geq 50 \text{ kg/m}^3$ )

Leather

*Sectional Elevation*



### *Metal Structure*

Ø16 mm Stainless steel tubes

Bent with Tecnoline

TIG welded

*[AutoCAD Drawings]*