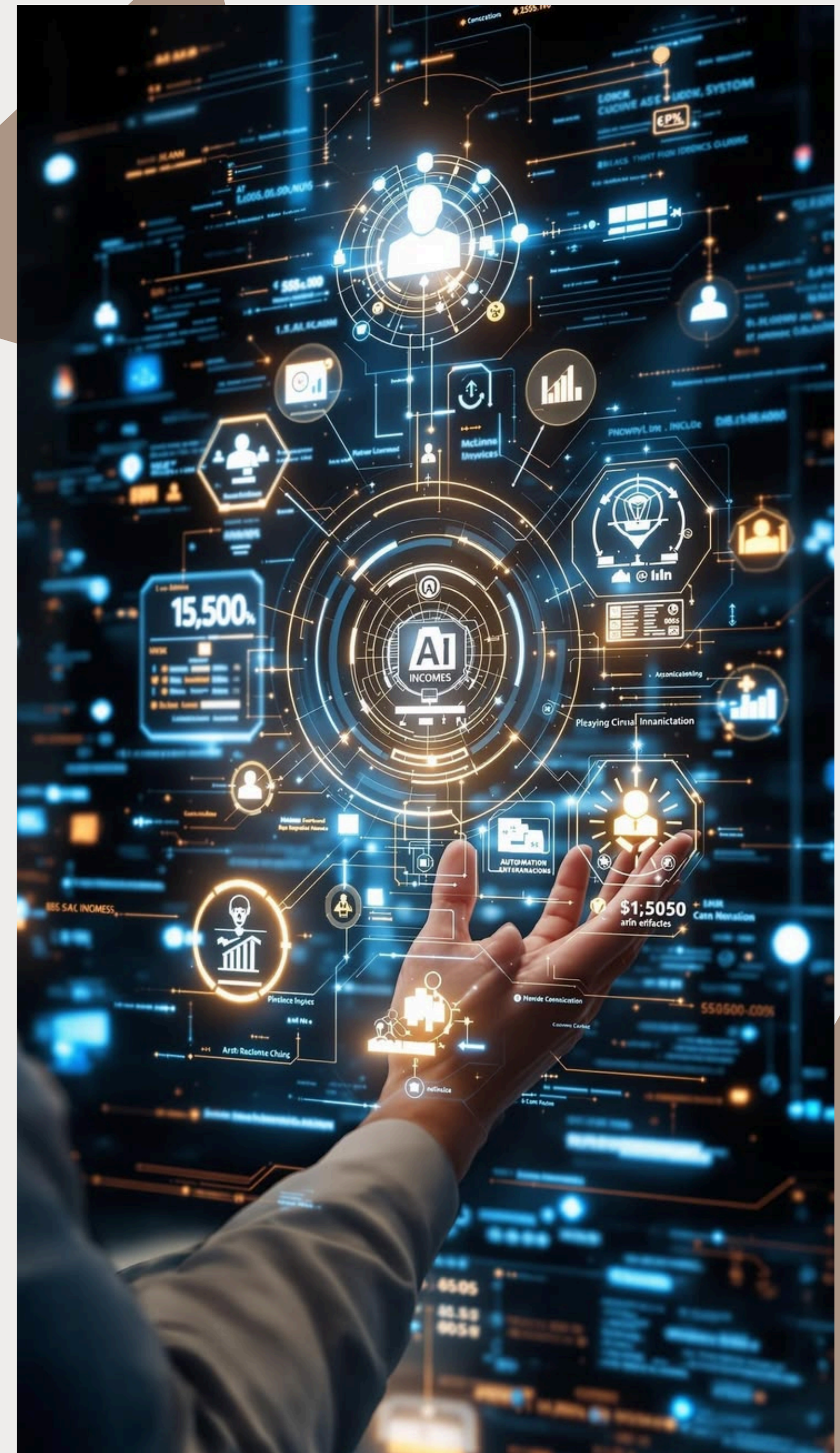
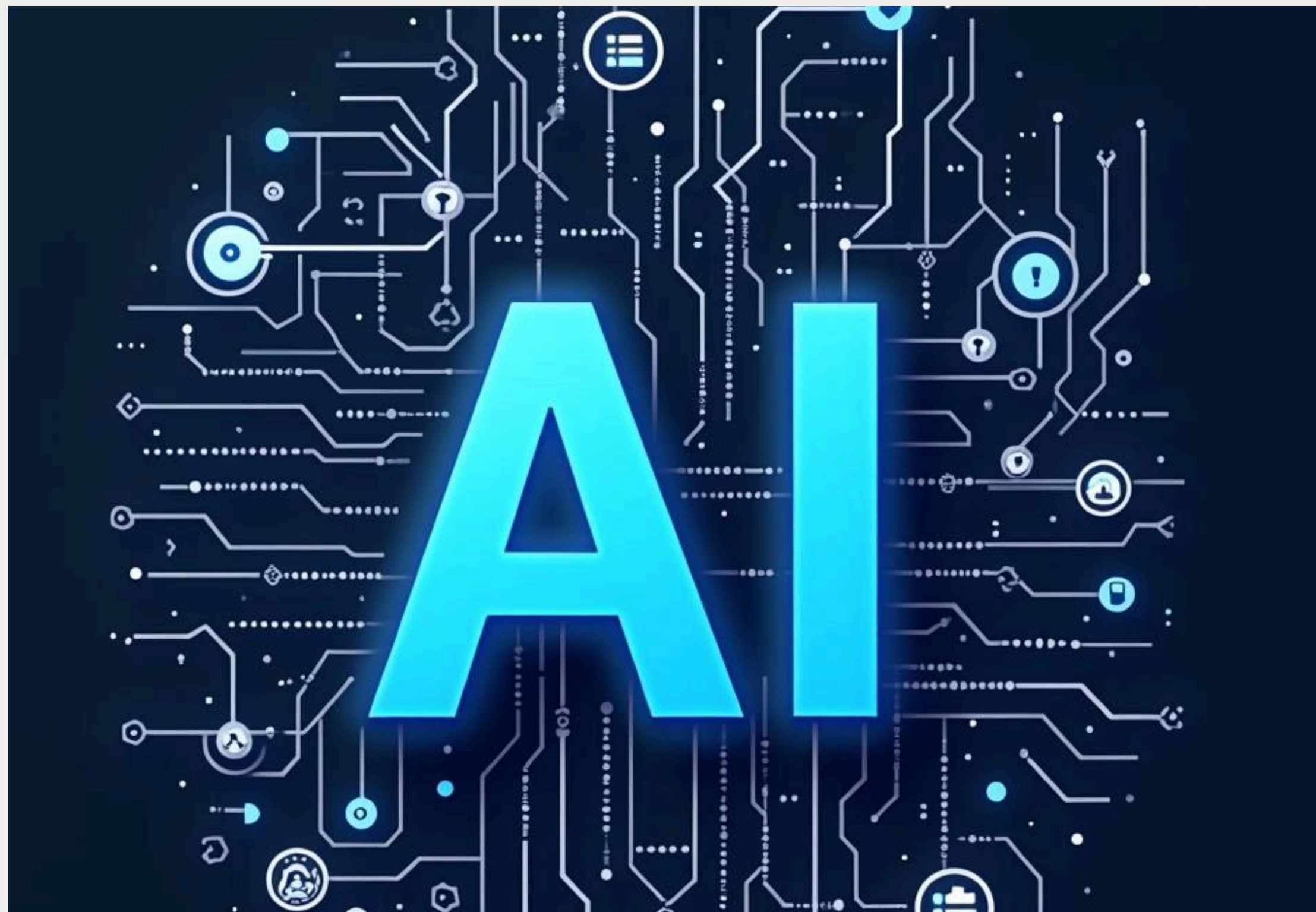


# ARTIFICIAL INTELLIGENCE

in the design work flow



I would like to sincerely thank my mentor, Amandeep Malhotra, for guiding and supporting me in understanding the role of Artificial Intelligence in Interior Design. Your valuable guidance, constant encouragement, and knowledge helped me explore new tools and technologies that improve creativity and efficiency in the design process.

Under your mentorship, I gained important knowledge about using AI tools for visualization, rendering, space planning, and concept development. Your support has not only strengthened my technical abilities but has also broadened my understanding of how technology is shaping the future of interior design.

I am truly grateful for your inspiration and motivation, which encouraged me to think more creatively, work with confidence, and adopt modern technologies in the field of design. Your mentorship has been an important part of my journey and growth as a designer.

# SHELL SHAPE CAFE



# FUTURISTIC MUGHAL MUSIC ROOM CONCEPT

## PROMPT

This concept envisions an immersive music chamber that merges the aesthetic heritage of Mughal architecture with cutting-edge interactive technology. The structural foundation contrasts the warmth of textured red sandstone walls with the coolness of a white marble floor, which is reimagined as a dynamic 3D light surface that responds visually to music. The traditional dome is replaced by a transparent crystal structure providing natural light by day and pulsing, music-synchronized illumination at night. Sound is generated not by speakers, but by floating holographic projections of instruments—from traditional sitars to futuristic synthesizers. The entire space is reactive, with "smart mortar" in the walls and inlaid precious stones subtly shifting color and glowing in response to musical vibrations, creating a cohesive dance of light and sound



# INDIAN BOUTIQUE DESIGN



# MINIMALIST BOUTIQUE DESIGN



# PROMPT

This guide breaks down how to transition from a basic description to a professional architectural prompt by focusing on three main "levers": lighting, material specifics, and camera perspective.

Here is a summary of the two directions and the core upgrades:

The Two Design Directions

Option 1: Clean & Professional (The "Architectural Digest" Look)

Focus: Wide-angle photography, monochromatic palettes (terracotta/clay), and biophilic minimalism.

Vibe: Productive, high-end, and airy.

Option 2: Warm & Immersive (The "Mood & Texture" Look)

Focus: Macro-details, rich organic textures (timber, jute, slate), and lush vertical forests.

Vibe: Cozy, humid, and sophisticated.

The Key Refinements

Technical Lighting: Instead of just "bright," it uses terms like "golden hour," "cinematic lighting," and "soft amber ambient light" to define the mood.

Material Specifics: It swaps generic terms for high-texture descriptions like "baked-clay walls," "raw oak," "hand-woven jute," and "matte clay."

Camera & Perspective: It specifies the "shot" type—using "wide-angle photography" for scale or "macro-detail" to emphasize craftsmanship.

# BIOPHILIC OFFICE



# FRENCH LUXURIOUS MAXIMALIST LIVING ROOM

## PROMPT

Imagine stepping into a space that whispers elegance and embraces delightful extravagance.

**Color Palette:** The serene blend of sky blue and off-white will serve as a sophisticated foundation. The off-white will lend an airy lightness, while the sky blue introduces a calming yet subtly vibrant touch. Consider varying shades of sky blue – perhaps a dusty, muted tone for the walls and richer hues in the textiles – to add depth.

**Textures:** Indulge in the sensation of soft and exceptionally comfortable fabrics. Think plush velvet for the round three-seater sofa, inviting you to sink in. Juxtapose this with the playful allure of a lips-shaped couch upholstered in a luxurious silk or a high-pile faux fur. The glossy finish surfaces on accent tables or perhaps a lacquered cabinet will reflect light beautifully, adding a touch of glamour.

**Style & Mood:** The centerpiece will undoubtedly be the three-seater round fur sofa, a statement of both comfort and unique style. The beautiful lips-shaped couch adds a whimsical and artistic flair, injecting personality into the room. The overall mood will be one of comfort, calm, soothing softness, achieved through the tactile fabrics and harmonious color palette, yet with an underlying sense of playful luxury.

**Flooring:** The glossy flooring will enhance the sense of spaciousness and reflect the abundant lighting. Imagine polished marble or a high-shine lacquer finish, perhaps in a light, complementary tone to the walls.

**Lighting:** While minimal natural light filters in, the room will come alive with lots of strategically placed LED lighting. Think dimmable recessed lights to create a soft, ambient glow, complemented by elegant wall sconces with intricate detailing and perhaps a striking floor lamp with a unique design.

**Ceiling:** A quintessential French-style ceiling with ornate molding and perhaps delicate plasterwork will add architectural interest. The long, dramatic chandelier will serve as a breathtaking focal point, its crystals or intricate metalwork catching and scattering the LED light. A big, round window will offer a glimpse of the outside world, balancing the interior's richness.

**Purpose:** This living room is designed for ultimate comfort, a sanctuary where you can unwind and feel completely at ease. The soft textures and calming colors will contribute to a soothing atmosphere, while the luxurious elements elevate the space, making it feel special and indulgent.

By layering these elements thoughtfully, you'll create a French maximalist living room that is both visually stunning and deeply comforting – a true haven of sophisticated relaxation.



# CYBERPUNK FITNESS GYM

## PROMPT

Neon Pulse Athletics is a cyberpunk-inspired gym that blends the raw industrial aesthetic of a warehouse with futuristic neon lighting, creating a bold, high-energy workout environment similar to an underground training facility in a dystopian city.

The space features brick and concrete walls, exposed steel beams, copper pipes, and matte black rubber flooring with LED pathways, while large glass walls showcase the glowing interior from the street.

A tri-tone neon lighting system organizes the gym into zones:

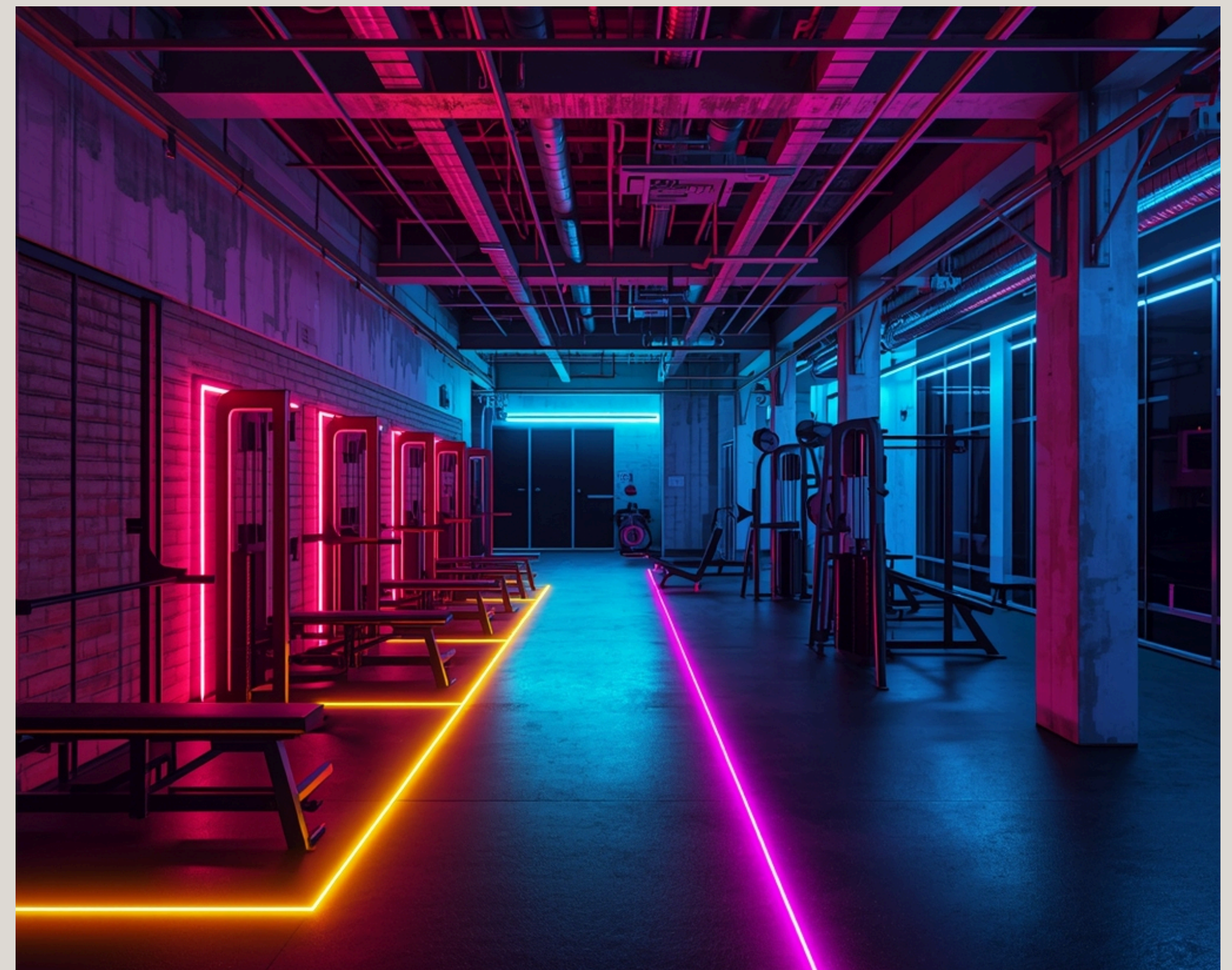
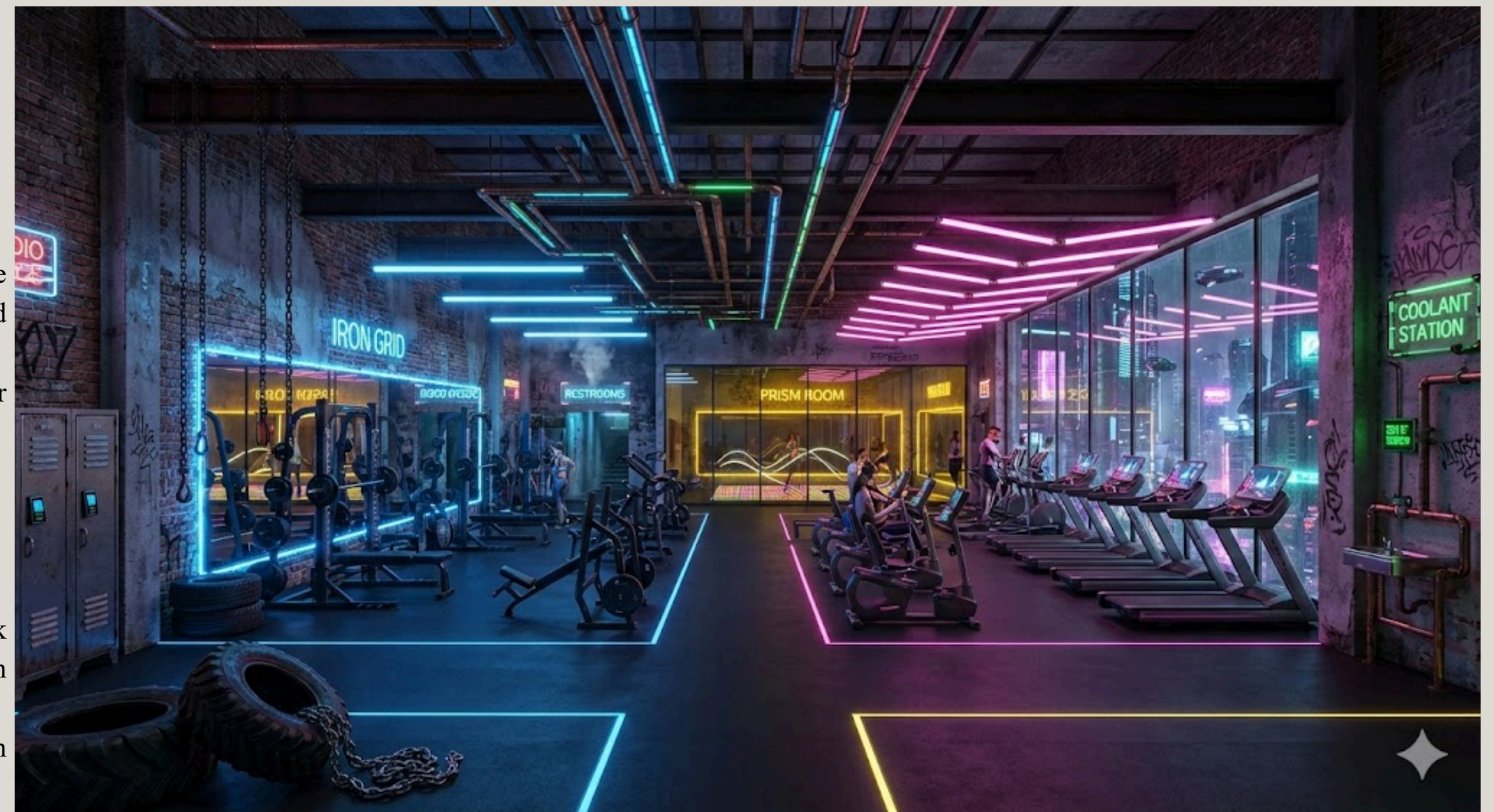
Electric Blue for the strength training area

Cyber Pink/Magenta for the cardio section

Warning Yellow/Amber for the Zumba and stretching studio

Key areas include the Iron Grid (industrial strength training with heavy equipment), the Velocity Deck (cardio machines with AR cityscape displays), and the Prism Room (a dance and stretching studio with reactive LED floors and infinity mirrors).

Industrial details like shipping-container lockers, exposed pipe hydration stations, and holographic or neon signage enhance the futuristic atmosphere.





# NEO-MINIMALISM HOME OFFICE

## PROMPT

Design a home office with Neo minimalism approach ( add a pop of energetic orange to boost creativity & productivity in according to use natural material like plant, sun raise coming inside the office from window .with modern elements like glass , flower vase , warmed colors & texture to space organic & gemoetrical ( circle) furniture couch , table . Chair shapes are square create



# PROMPT

‘Visualise a serene meditation room blending Japanese Zen and Scandinavian minimalism’. Refine by adding materials and lighting style



# RETRO CHIC FUTURISTIC BEDROOM



# ART DECO INSPIRED LUXURY LOUNGE



THANKYOU

