

# CAPSTONE PROJECT

# *Kindergarten* DESIGN CONCEPT

## CONCEPT OVERVIEW

THE KINDERGARTEN INTERIOR IS ENVISIONED AS A VIBRANT, NURTURING, AND STIMULATING ENVIRONMENT THAT SUPPORTS EARLY CHILDHOOD DEVELOPMENT THROUGH PLAY, EXPLORATION, AND COMFORT. THE SPACE IS DESIGNED TO BALANCE LEARNING AND IMAGINATION, CREATING AN ATMOSPHERE WHERE CHILDREN FEEL SAFE, CURIOUS, AND INSPIRED.

## MATERIAL & COLOUR PALETTE

THE MATERIAL AND COLOUR PALETTE IS CURATED TO CREATE A BALANCED, CHEERFUL, AND CALMING ENVIRONMENT THAT STIMULATES YOUNG MINDS WHILE MAINTAINING VISUAL HARMONY. THE APPROACH BLENDS SOFT NEUTRALS WITH PLAYFUL ACCENTS AND SAFE, TACTILE MATERIALS TO SUPPORT SENSORY EXPLORATION.

## DESIGN PHILOSOPHY

THE DESIGN PHILOSOPHY IS ROOTED IN CREATING A CHILD-CENTRIC, SAFE, AND STIMULATING ENVIRONMENT THAT NURTURES CURIOSITY, CREATIVITY, AND EMOTIONAL WELL-BEING. THE SPACE IS ENVISIONED NOT JUST AS A CLASSROOM, BUT AS AN EXPERIENTIAL LANDSCAPE WHERE CHILDREN LEARN, PLAY, AND GROW HOLISTICALLY.

## LIGHTING CONCEPT

THE LIGHTING DESIGN IS ENVISIONED AS A SOFT, LAYERED, AND CHILD-SENSITIVE SYSTEM THAT ENHANCES COMFORT, SUPPORTS LEARNING, AND CREATES A WARM, WELCOMING ATMOSPHERE. IT BALANCES NATURAL DAYLIGHT WITH GENTLE ARTIFICIAL LIGHTING TO ENSURE VISUAL CLARITY WITHOUT HARSHNESS.

## SPACIAL PLANNING

THE LAYOUT IS DIVIDED INTO FLUID, CHILD-FRIENDLY ZONES:

- ACTIVITY AREA - OPEN, FLEXIBLE SPACE FOR GROUP LEARNING AND PLAY
- READING NOOK - COZY CORNERS WITH SOFT SEATING TO PROMOTE QUIET TIME
- CREATIVE ZONE - ART WALLS, CRAFT TABLES, AND DISPLAY BOARDS
- SENSORY PLAY AREA - TEXTURED MATERIALS AND TACTILE EXPERIENCES
- STORAGE SOLUTIONS - LOW-HEIGHT, ACCESSIBLE UNITS ENCOURAGING INDEPENDENCE

THE CIRCULATION IS KEPT OPEN AND INTUITIVE, ENSURING SAFETY AND EASE OF MOVEMENT.

# *Playful Contemporary* INTRODUCTION

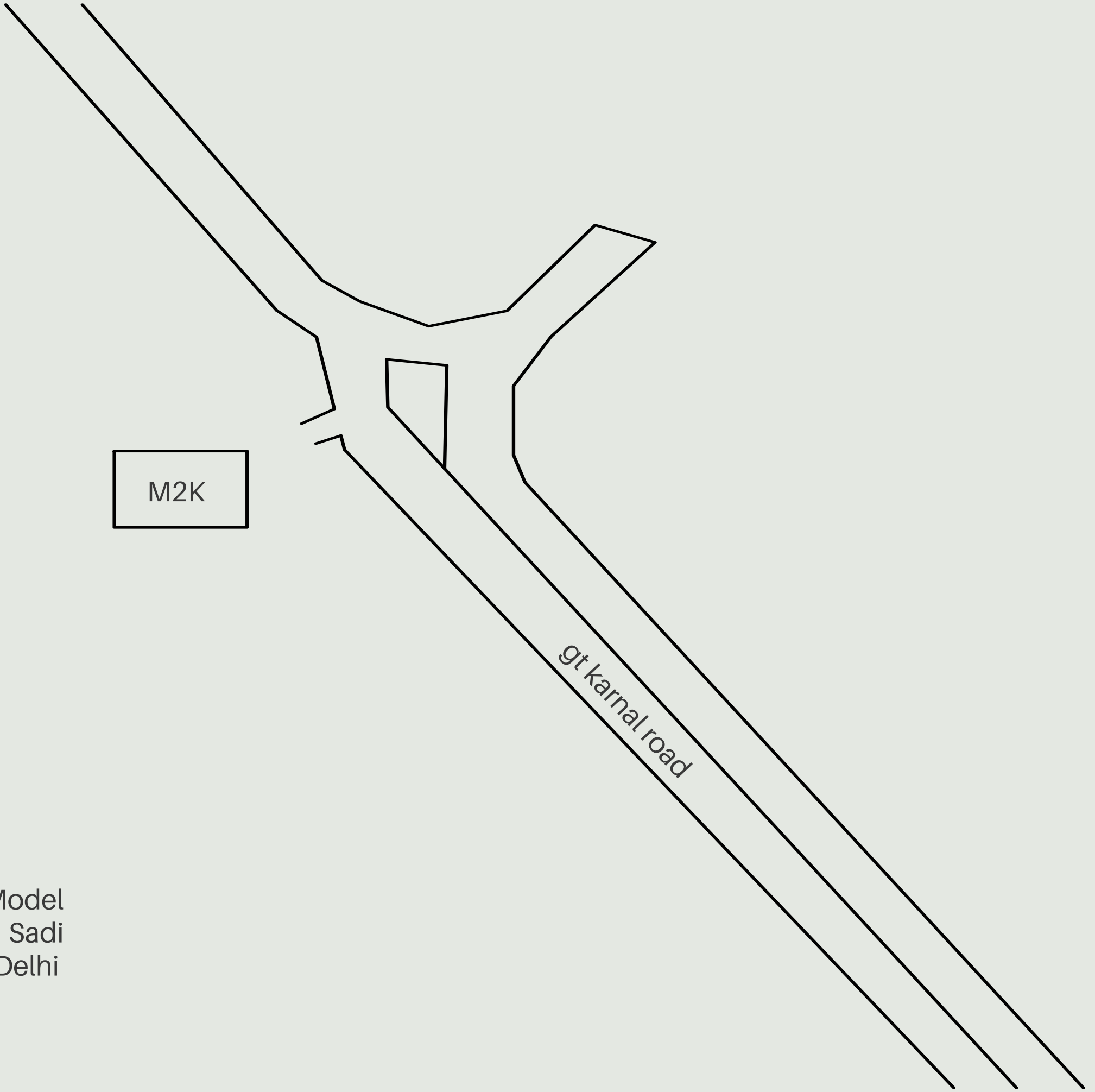
---

Kindergarten is the first step into a child's educational journey, making the design of its environment both impactful and meaningful. The interior is envisioned as a holistic, child-centric space that nurtures curiosity, creativity, and a sense of comfort. It goes beyond conventional classroom design, transforming the space into an interactive and engaging learning environment.

The design approach integrates play, learning, and safety into a seamless experience, where every element—from spatial planning and materials to colours and lighting—contributes to a child's development. Soft forms, vibrant accents, and tactile materials are carefully combined to create a space that is stimulating yet calming, encouraging exploration while ensuring emotional well-being.

With a strong emphasis on functionality, flexibility, and sensory engagement, the kindergarten interior supports various activities such as learning, playing, resting, and social interaction. The overall aim is to craft an environment that feels welcoming, joyful, and inspiring, allowing children to grow, discover, and express themselves freely in a safe and thoughtfully designed setting.





M2K

gt karnal road

M2K Victoria garden, adjoining Model  
Town Road, opposite Azadpur, Sadi  
Nagar, Lal Bagh, Model Town, New Delhi

# CONCEPT IDEATION

---



**LEARNING AND ACTIVITY AREA**



**PLAY AREA**



**CLASSROOM**



**WASHROOM**



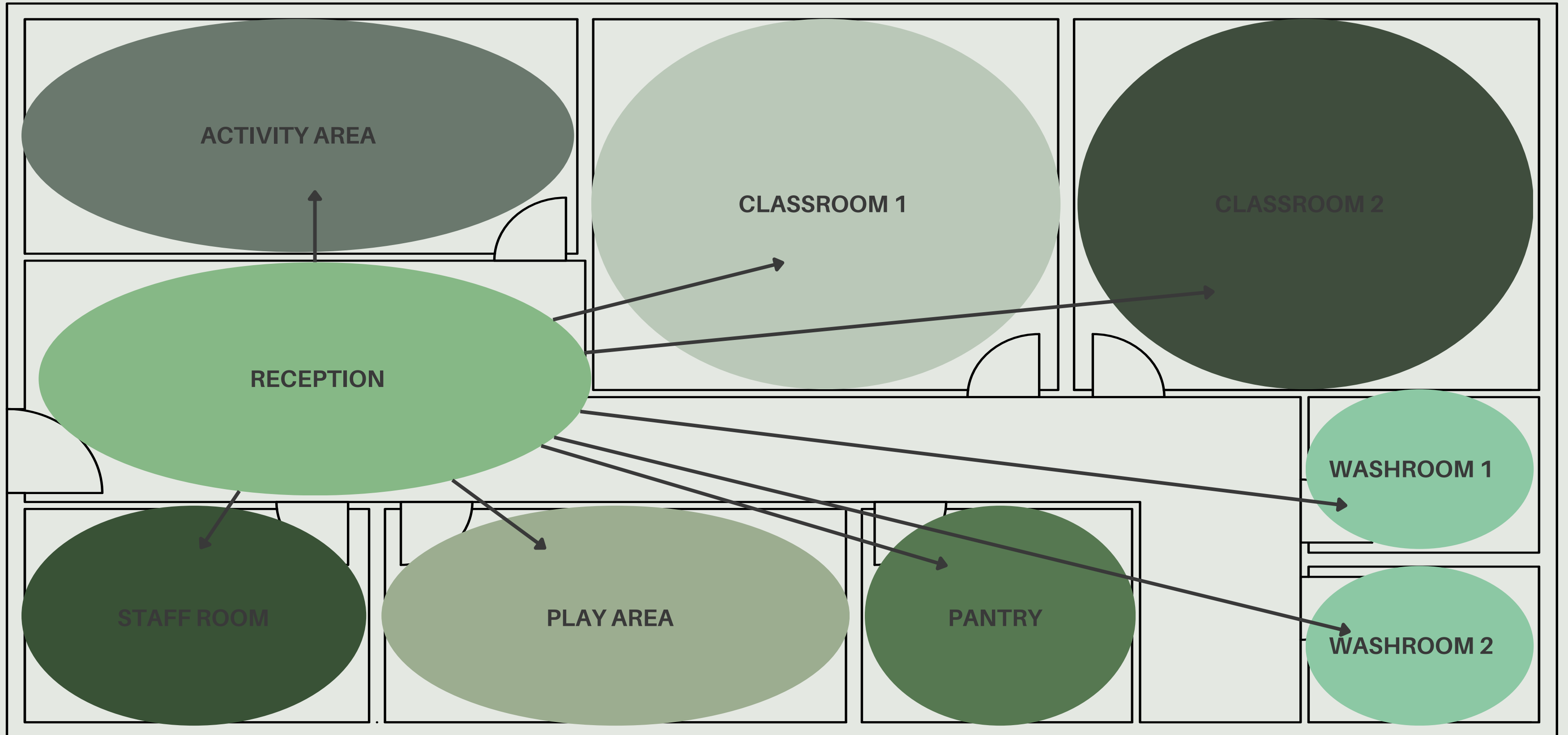
**STAFFROOM**



**KITCHEN**

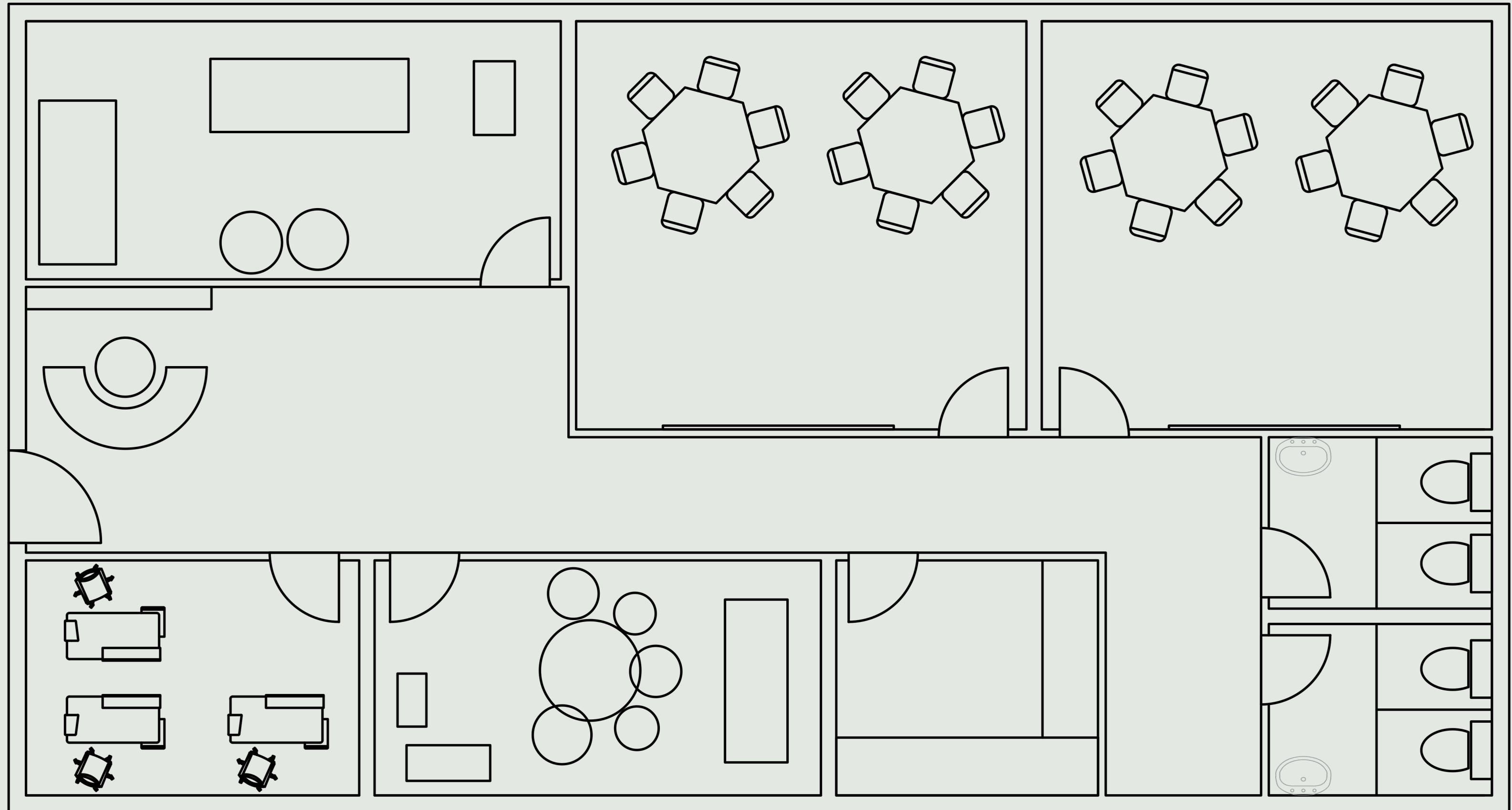
# BUBBLE DIAGRAM

---



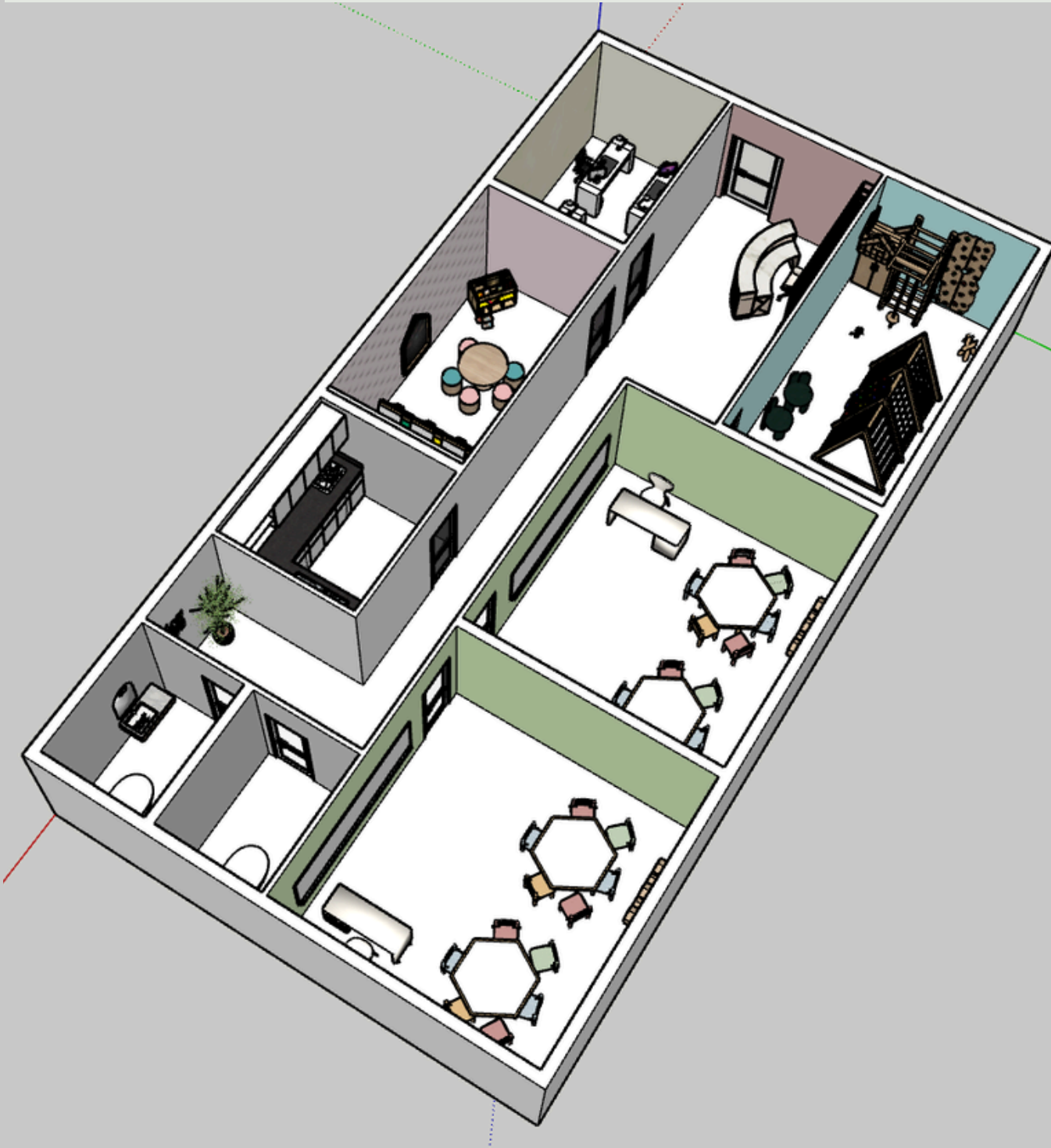
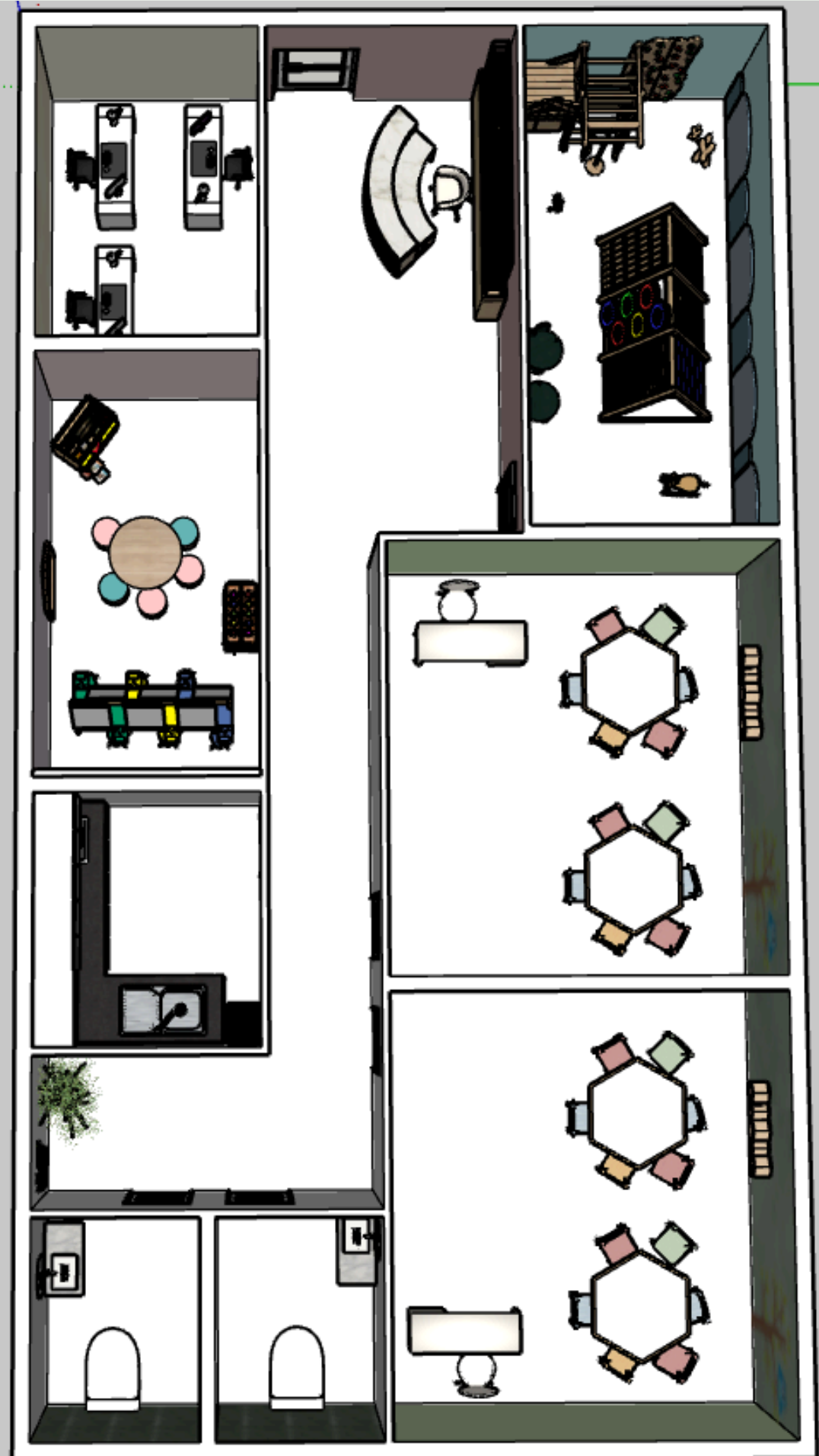
# KINDERGARTEN LAYOUT

---



# 3D MODELS AND RENDER



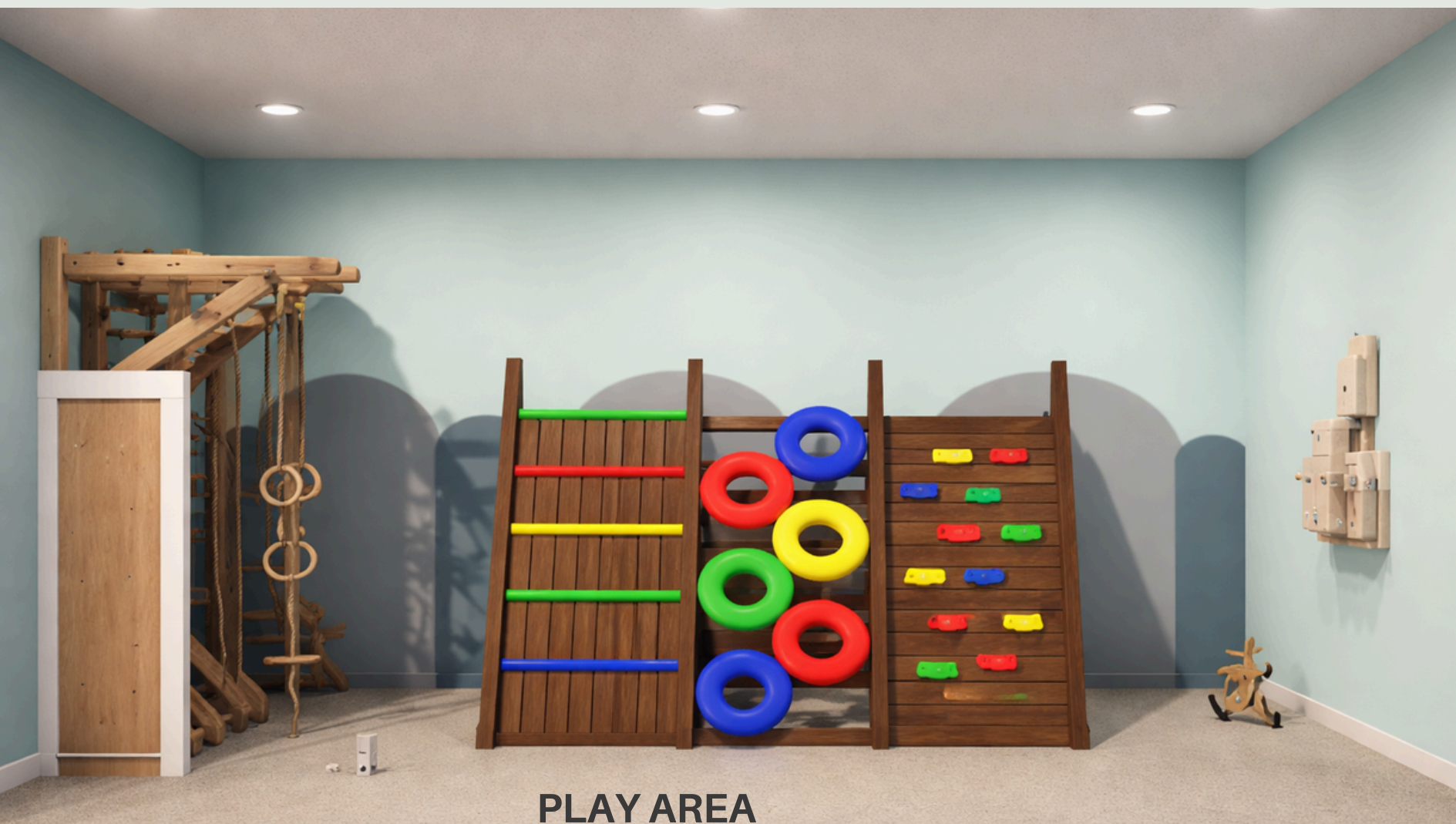




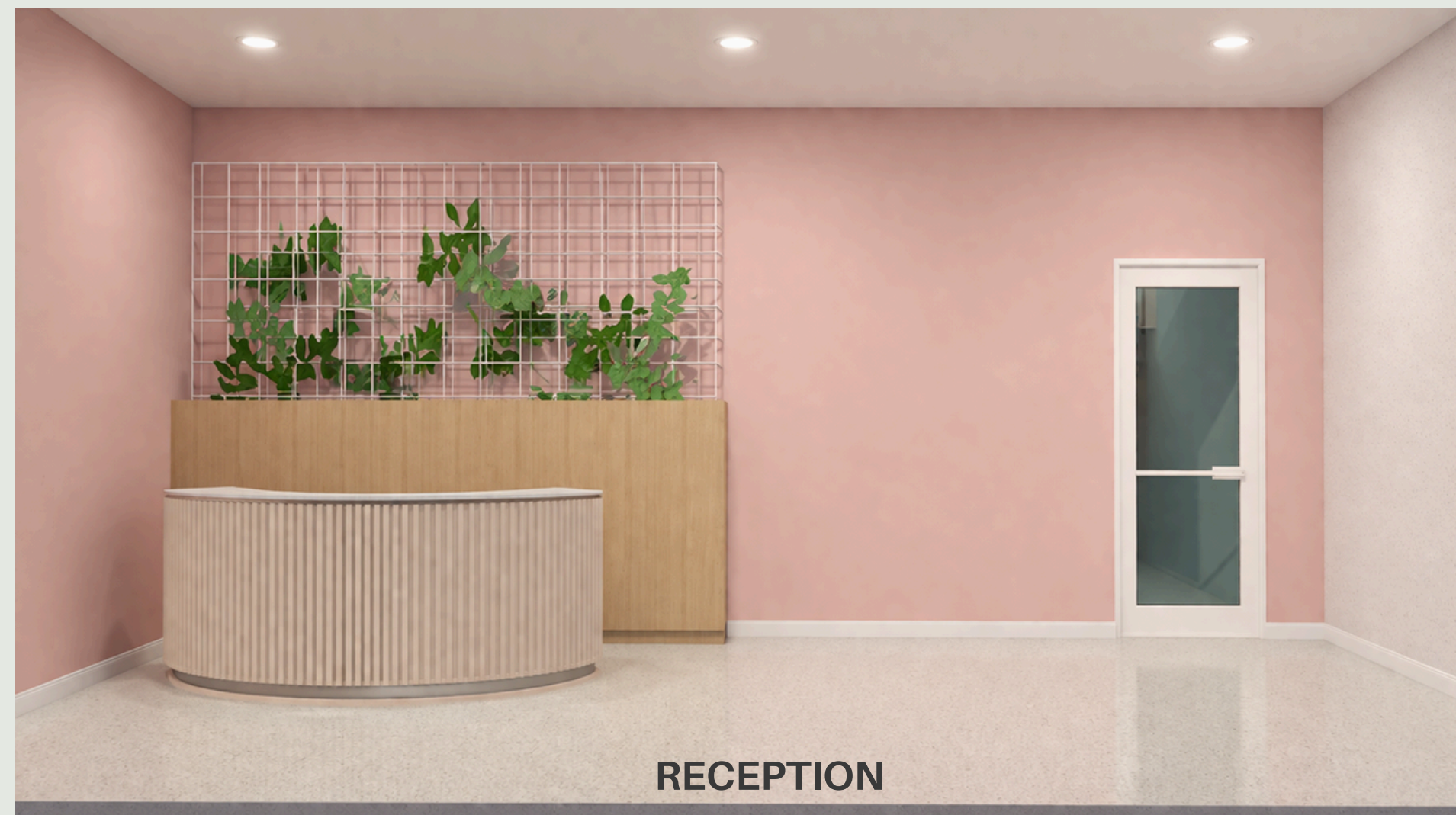
**ACTIVITY AREA**



**CLASSROOM**



**PLAY AREA**



**RECEPTION**

*Thank*  
YOU

ANJALI DUDHERIA  
BATCH 24