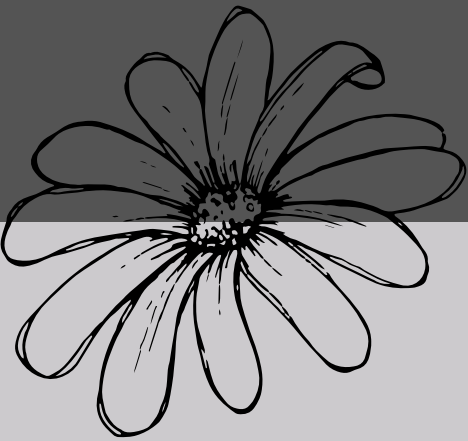




Specialization
PROJECT

ANJALI DUDHERIA
YEAR 2024, BATCH 24
SUBMITTED TO MRS. CHETNA SHARMA

ACKNOWLEDGEMENT



I would like to express my sincere gratitude to everyone who supported and guided me throughout the completion of this project.

First and foremost, I would like to thank my teacher/mentor, Mrs. chetna sharma, for their valuable guidance, continuous encouragement, and constructive suggestions at every stage of this project. Their insights and expertise greatly contributed to the successful completion of this work.

I am also thankful to the management of Academy of applied arts for providing me with the opportunity and necessary resources to carry out this project.

I extend my heartfelt thanks to my parents and family for their constant support, motivation, and understanding. Their encouragement helped me stay focused and determined.

Lastly, I would like to thank my friends and classmates who directly or indirectly assisted me in completing this project successfully.

I am truly grateful to everyone who contributed to making this project a meaningful learning experience.



Client *Profile*

NAME: Vinam gautam

AGE: 25

TITLE: FOUNDER

LOCATION: DELHI

Vinam is detail-oriented and analytical Data Analyst with a strong background in transforming complex data into clear insights that drive strategic decision-making. Experienced in collecting, cleaning, and interpreting large datasets to identify trends, solve problems, and support business growth.

Core competencies

- Data Cleaning & Preprocessing
- Statistical Analysis
- Data Visualization
- Predictive Analytics & Forecasting
- SQL & Relational Databases
- Python



Site Analysis

S: Close to public transport
Emerging commercial hubs

W: Traffic congestion
Space constraint

O: Growing commercial demands
Client proximity

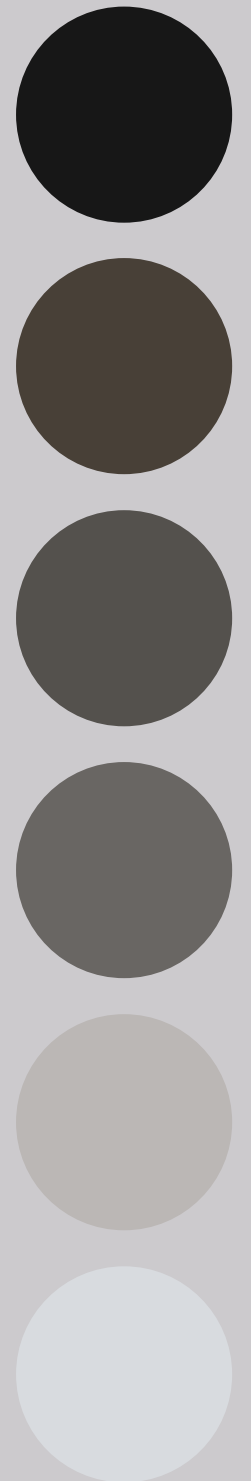
T: Urban overcrowding
Pollution and noise

Amenities :

- Metro station: Jhilmil metro station
- Bus station: Anand vihar ISBT
- Roads: NH9, Ghaziabad, Noida
- Parks and Sports: Yamuna sports complex
- Restraunts and cafes
- Retail and markets
- Banks and ATM
- Hospitals
- Pharmacies



Modern Contemporary design features clean lines, simple forms, and minimal decoration. It uses neutral colors, modern materials like glass and metal, and sleek functional furniture. The layout is open, flexible, and technology-friendly, focusing on comfort and productivity.



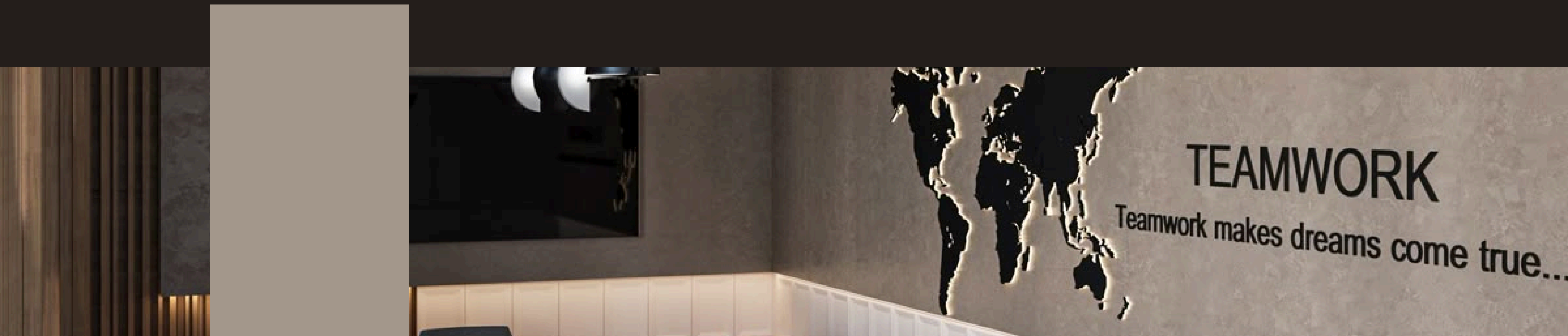
Theme board

MODERN CONTEMPORARY

Design Objectives

The primary objective in designing an office space is to create a functional, comfortable, and visually engaging environment that enhances employee productivity and reflects the company's brand identity. The layout should support efficient workflow, encourage collaboration, and provide areas for focus and privacy. Incorporating ergonomic furniture, natural lighting, and biophilic elements is essential to promote employee well-being. The design must also integrate modern technology seamlessly, including well-placed power outlets, AV systems, and reliable network access.

Sustainability is a key consideration, with the use of eco-friendly materials, energy-efficient lighting, and space planning that accommodates future growth. Additionally, the design must comply with safety, accessibility, and building code regulations, while staying within the client's budget and timeline. Finally, the space should be durable and easy to maintain, ensuring long-term usability and value. Additionally, the design must comply with health, safety, accessibility, and building code regulations, while staying within the client's budget and construction timeline.



Case Study 1

MICROSOFT OFFICE
NOIDA



Microsoft Office, now widely known as Microsoft 365, is one of the most popular productivity software suites used globally. It provides tools for documentation, data management, presentations, communication, and collaboration. Since its launch in 1989, Microsoft Office has transformed the way individuals, businesses, and educational institutions manage their work.



Color Scheme

Microsoft offices often use neutral tones (white, grey, beige) with vibrant accent colors inspired by the Microsoft logo (blue, green, red, yellow).

Materials Used

- Glass partitions for transparency
- Sustainable wood finishes
- Acoustic panels for sound control
- Carpet tiles for comfort and noise reduction

Lighting

- Maximum use of natural daylight
- LED energy-efficient lighting
- Task lighting at workstations

Furniture

- Ergonomic chairs and adjustable desks
- Modular and movable furniture
- Collaborative seating clusters



Microsoft's workplace interiors are based on:
Collaboration & Innovation - Encouraging teamwork through open layouts
Flexibility - Adaptable furniture and modular workstations
Technology Integration - Smart boards, digital screens, and virtual meeting rooms
Employee Well-being - Natural lighting, ergonomic furniture, greenery
The design reflects Microsoft's brand identity: modern, innovative, and forward-thinking.



LAYOUT

Office Buildings & Floors

The Noida Microsoft campus is spread across multiple floors in modern commercial towers (primarily KP Towers and adjacent buildings) in Sector 16A-16B, Noida, Uttar Pradesh.

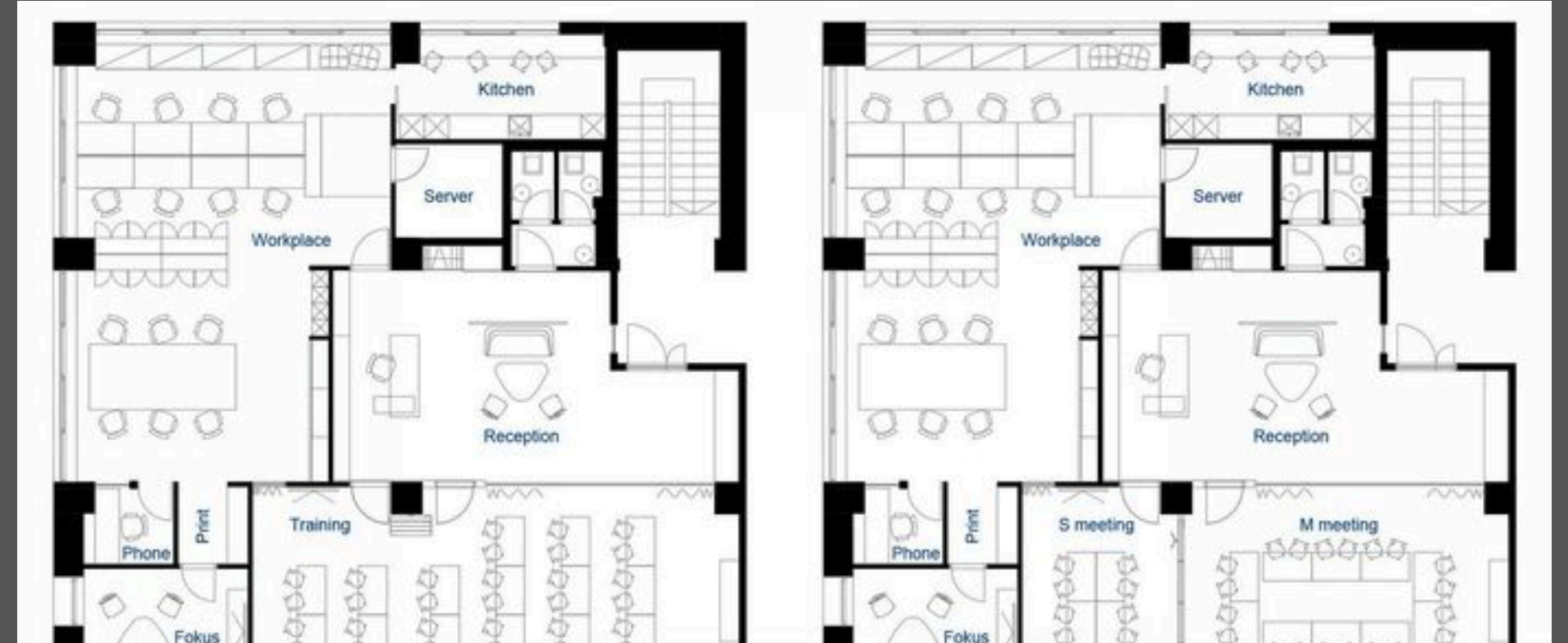
Part of the workspace functions as the India Development Centre (IDC), dedicated for research, engineering, cloud, AI, gaming, and collaboration teams.

Overall Layout Concept

Rather than a traditional cubicle-based grid of desks, the Noida office layout prioritises spaces for collaboration, creativity, and cultural aesthetics rooted in local architectural inspiration. The design concept is heavily influenced by the Taj Mahal, giving the interior a unique identity.

Key spatial principles include:

- Open workstations
- Collaborative hubs
- Focused zones for concentrated work
- Informal social / breakout areas
- Meeting & video-conference rooms
- Recreational / wellness space



Aesthetic Architectural Features

These serve both functional and decorative roles:

- Arched Corridors & Vaulted Ceilings

Walkways and corridors use arches inspired by classic Mughal forms, offering visual continuity throughout the floor.

- Jaali Screens & Marble Inlays

Perforated lattice screens offer privacy and design appeal while letting light filter through in interesting patterns.

- Domes & Sculptural Volumes

Small dome features above seating clusters bring a structured feel to open areas, while also improving acoustics.

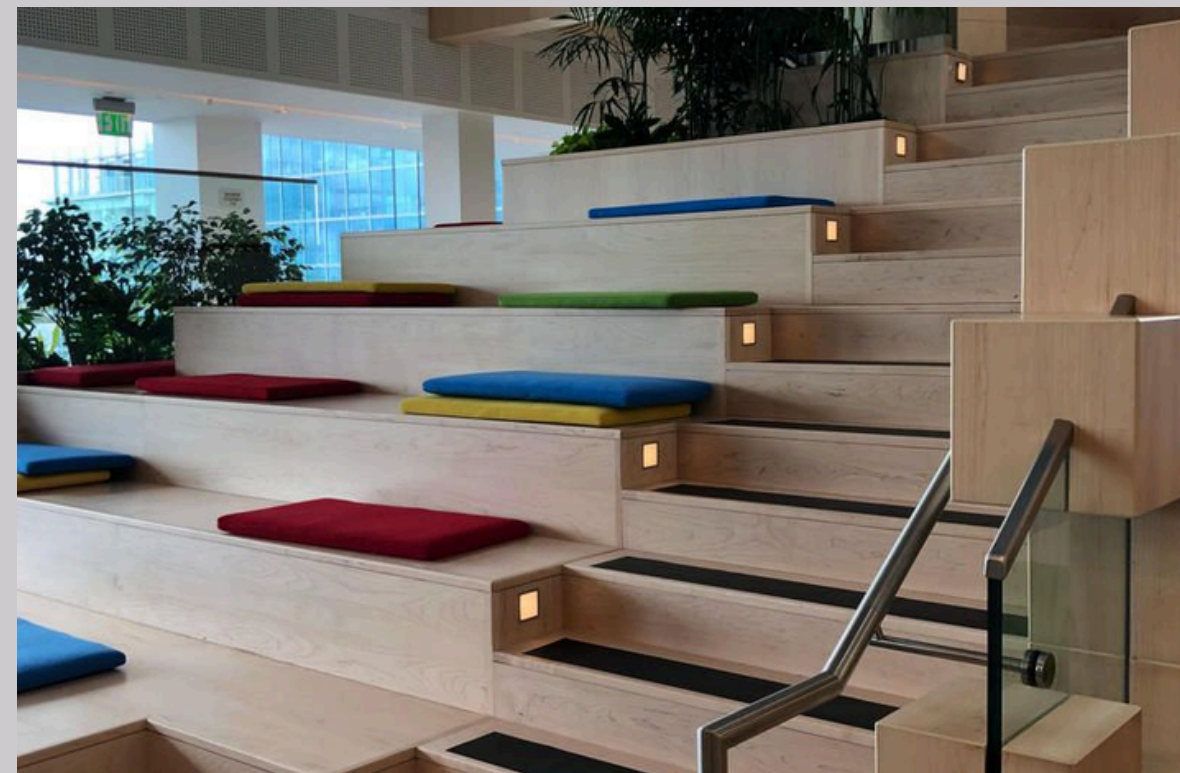
Case study 2

Google office
California



Google is widely recognized for revolutionary workplace design that breaks away from traditional corporate interiors. Its office interiors are designed to boost creativity, collaboration, well-being, and productivity. Google's design approach has influenced modern workplace design across the tech industry.

Open Plan & Flexible Layout
Google offices typically use an open plan layout where workstations are arranged without high partitions. This encourages communication, reduces hierarchy, and increases flexibility in how teams work together.



Large windows, outdoor terraces, and the integration of nature within interior spaces help improve employee well-being and reduce stress. These biophilic elements connect workers to nature and create healthier environments.



Google's office interior design focuses on:

- Open workspaces that encourage free communication and transparency
- Flexible zones for different types of work: quiet focus areas, collaborative hubs, and casual social spaces
- Playful and themed spaces that reflect local culture and global identity
- Biophilic and sustainable elements like natural light and indoor plants

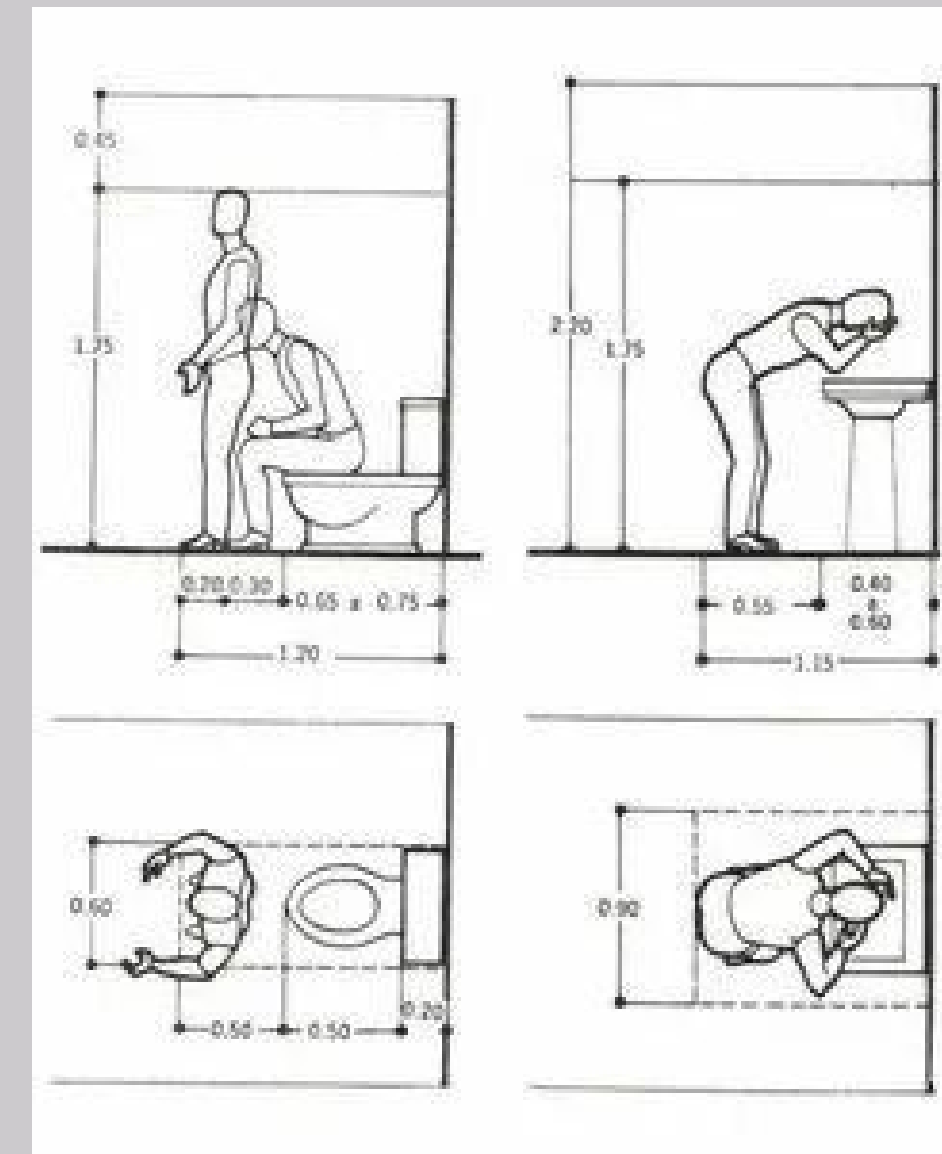
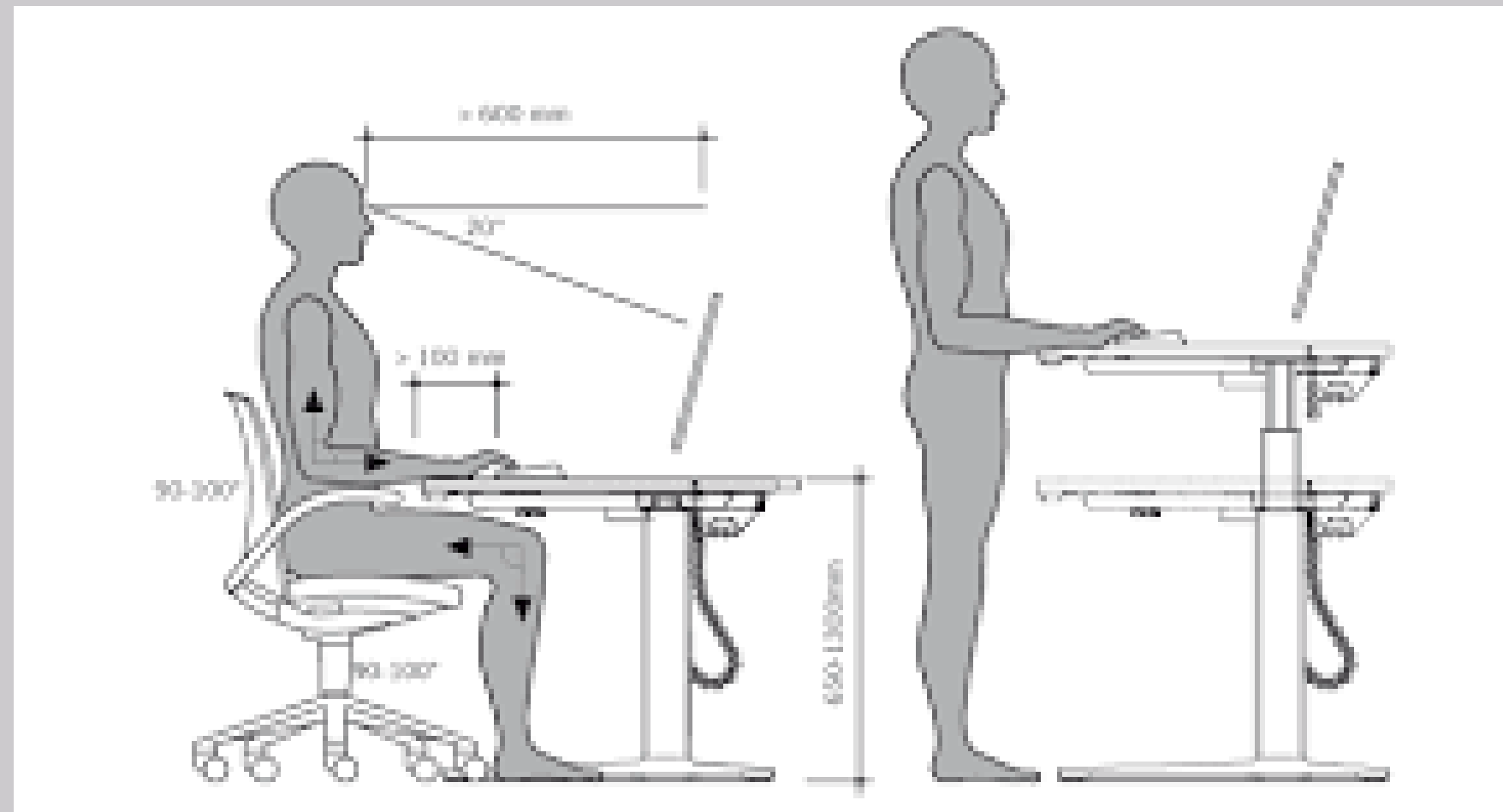
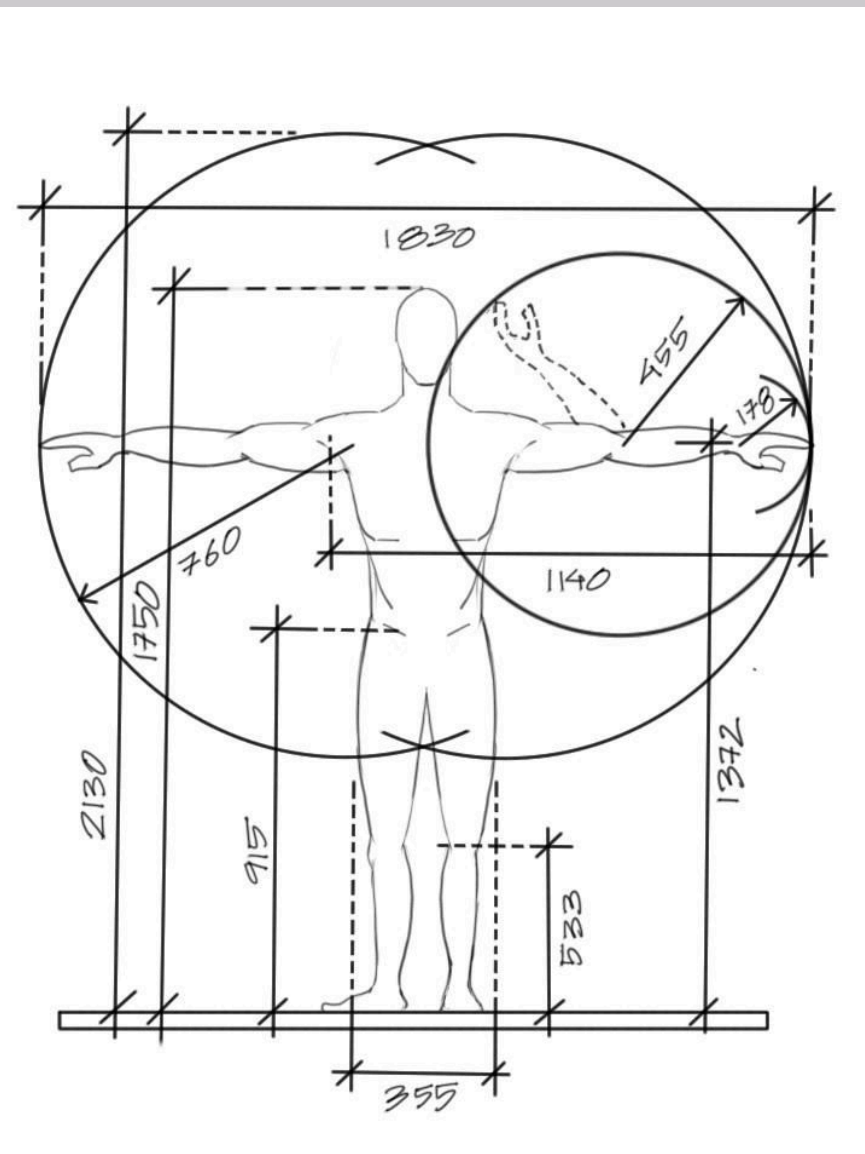
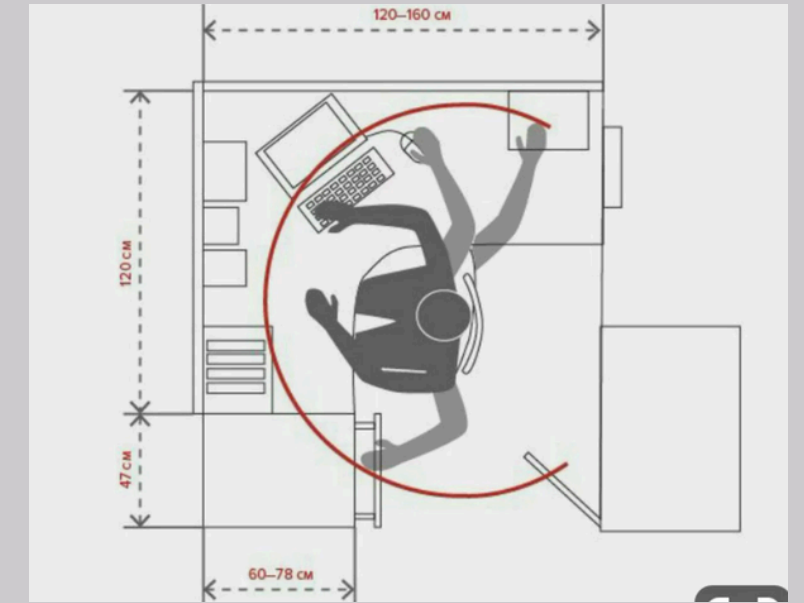
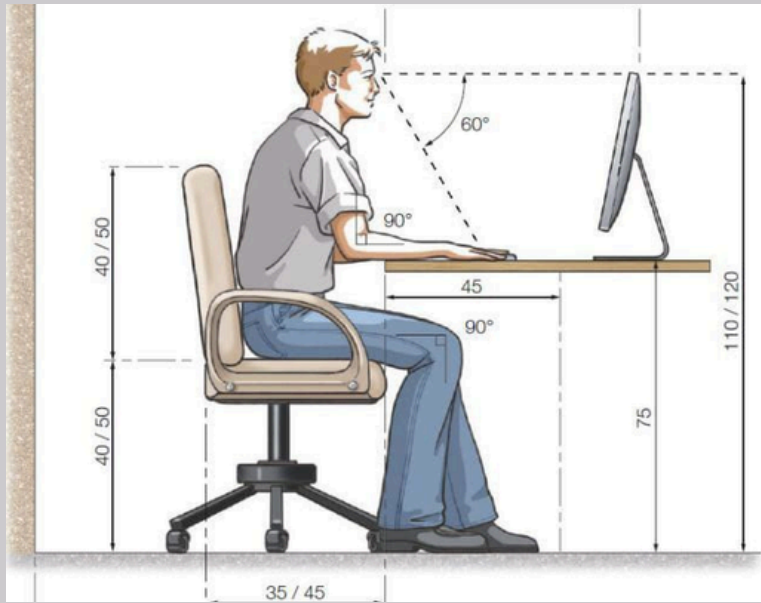
The overall concept is to break down the boundaries of traditional offices and design spaces that support mobility and adaptability.

AREA REQUIREMENT CHART

<u>space</u>	<u>size</u>
ceo's room	170 sqft
manager's room	130 sqft
waiting area	215 sqft
pantry	35 sqft
washroom 1 & 2	25 sqft & 25 sqft
conference room	270 sqft
staff area	890 sqft
storage	85 sqft

anthropometry

Anthropometry is the scientific study and measurement of the human body's physical dimensions, proportions, and composition. Derived from Greek terms for "human" and "measure," it involves systematic techniques to quantify size (height, weight), shape, and structure, widely used in nutrition, ergonomics, and anthropology

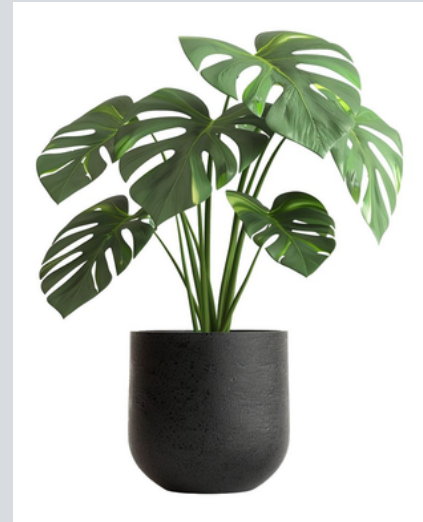
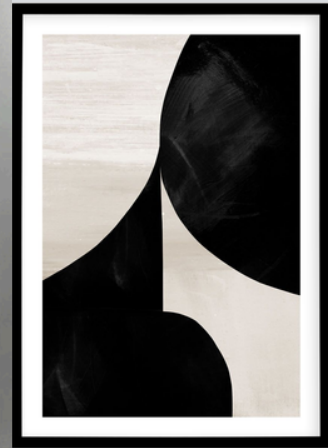


mood board: ceo's and manager's room

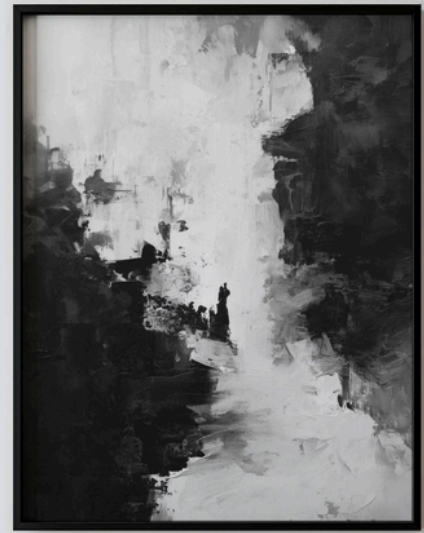
- #DAD90B
- #B988B6
- #898681
- #58534E
- #282623



manager



ceo



mood board: conference, staff room & reception



staff

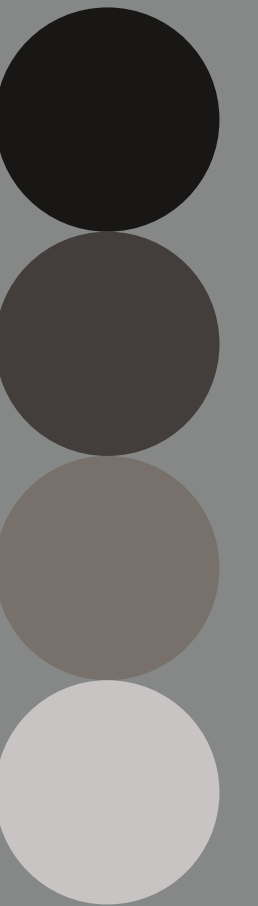
conference



reception

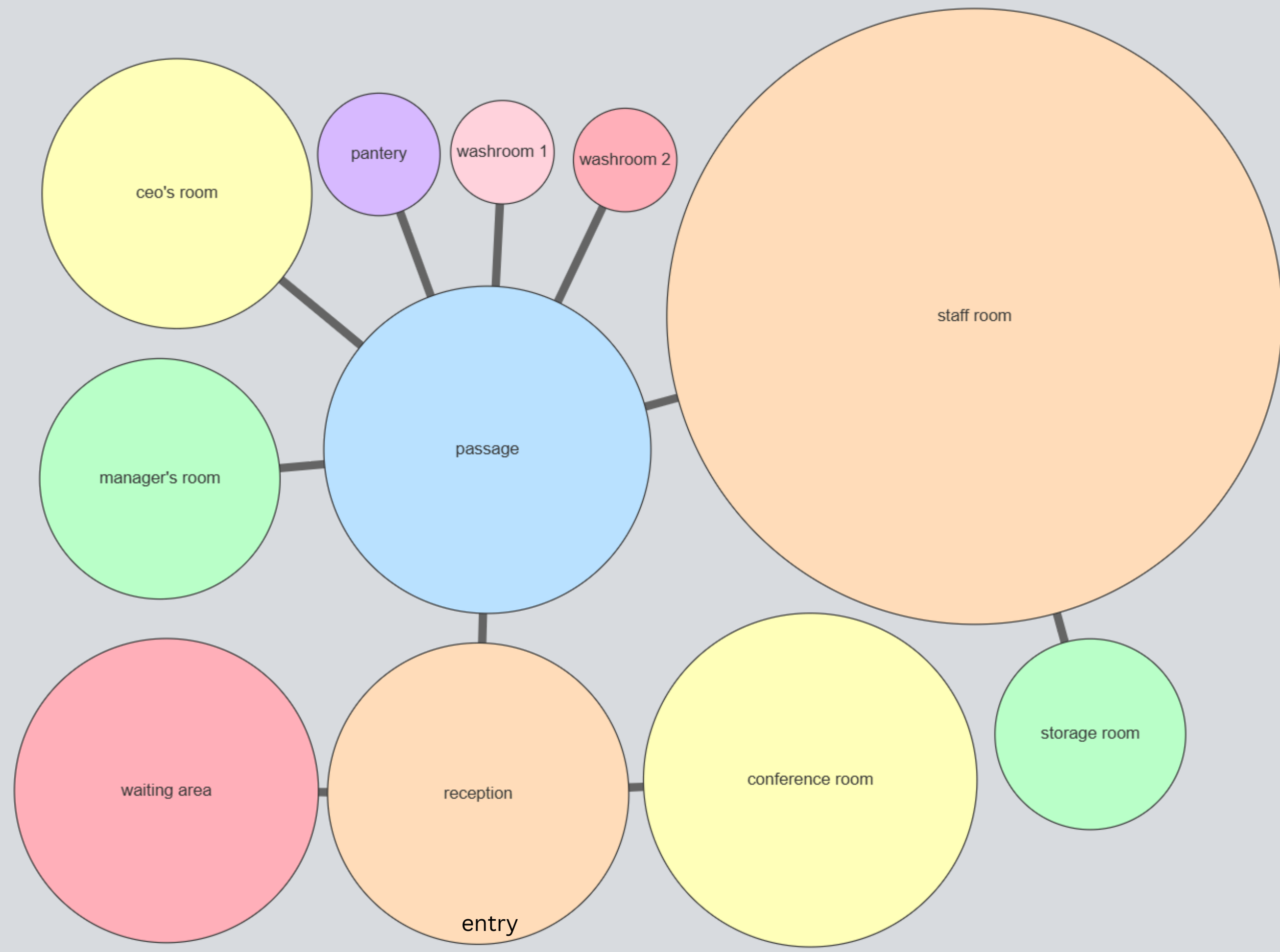


mood board: washroom

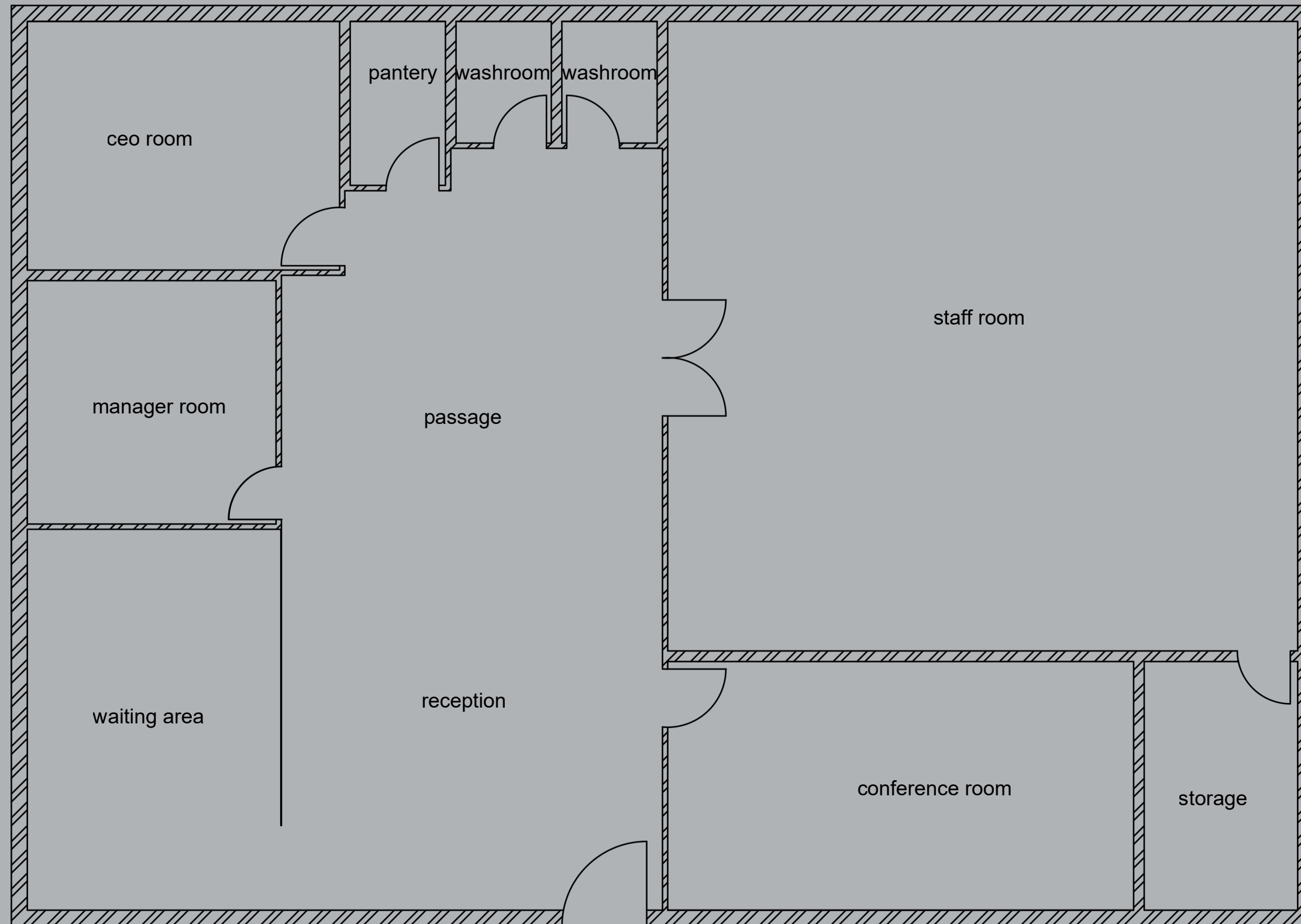


B
U
B
B
L
E
A
M

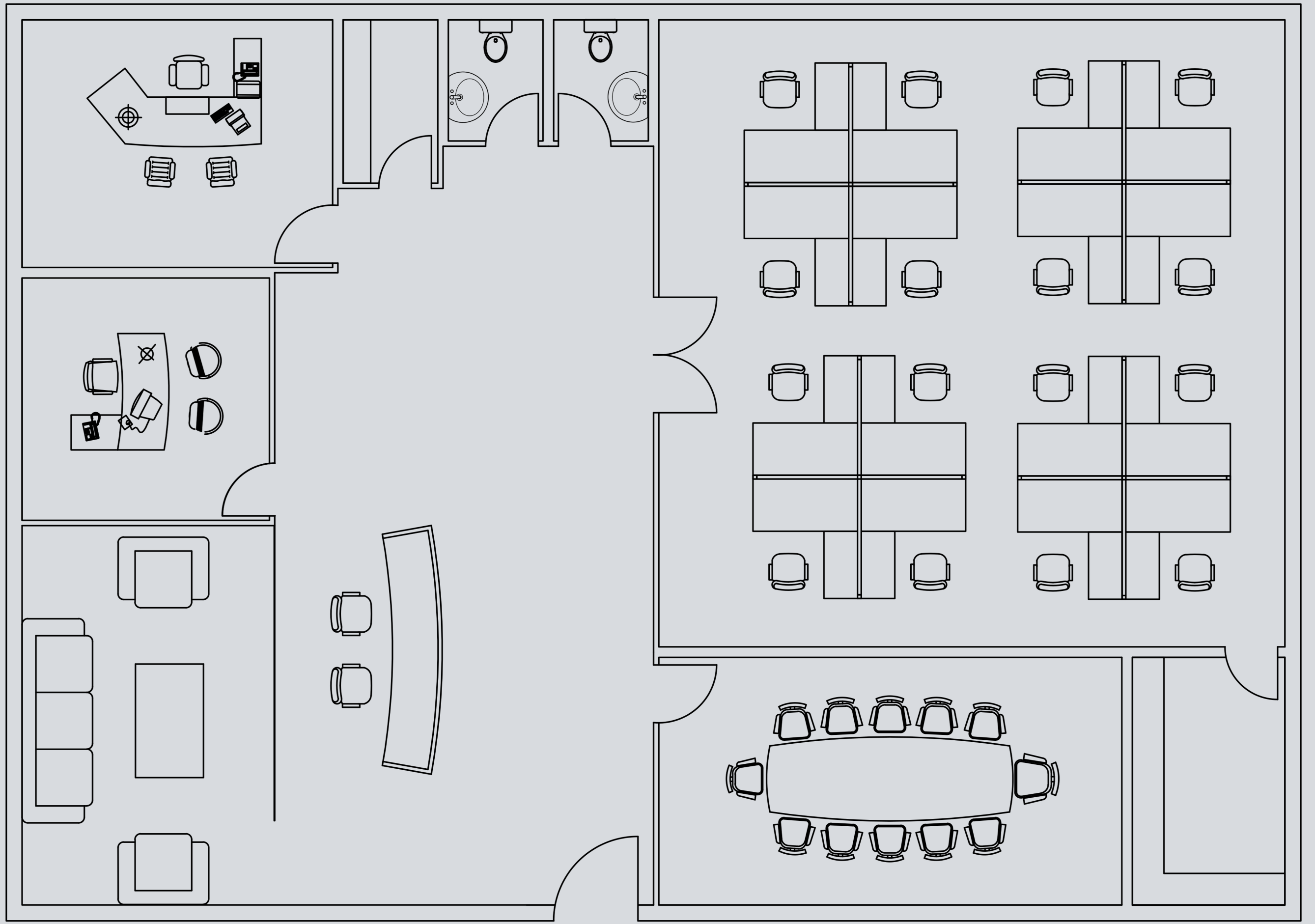
D
A
I
G
R
A
M



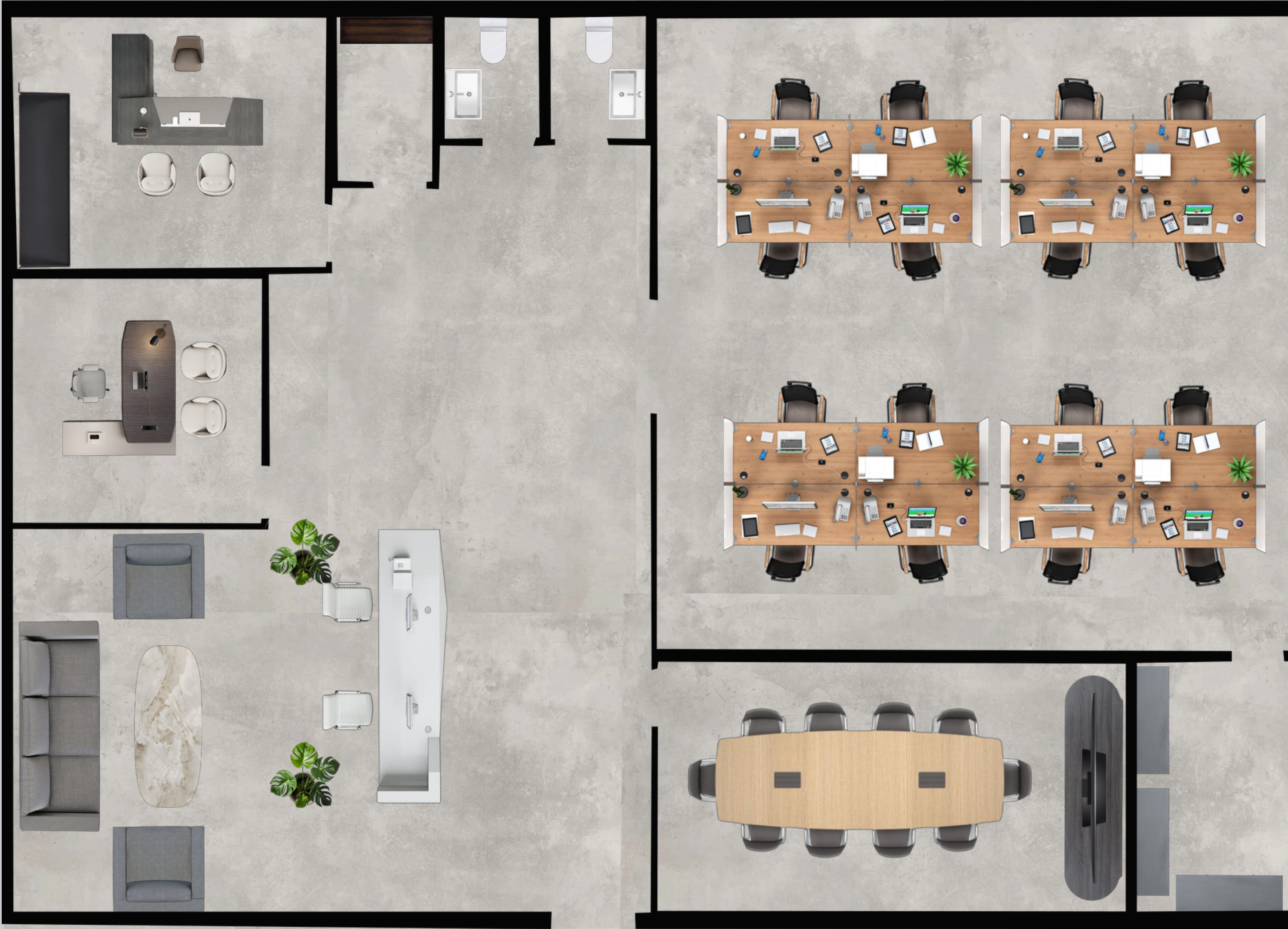
Single line diagram



L
A
Y
O
U
T
P
L
A
N

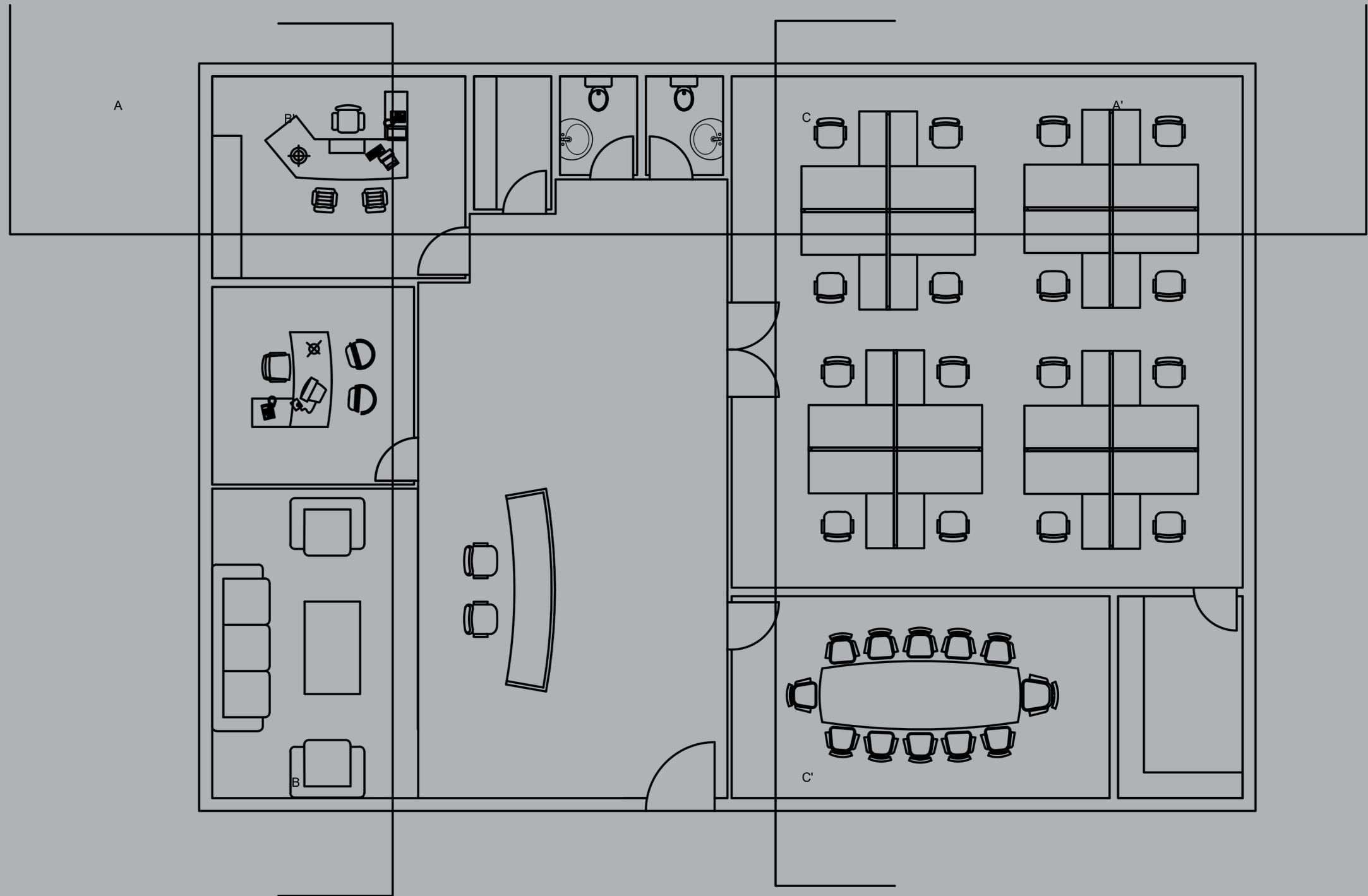
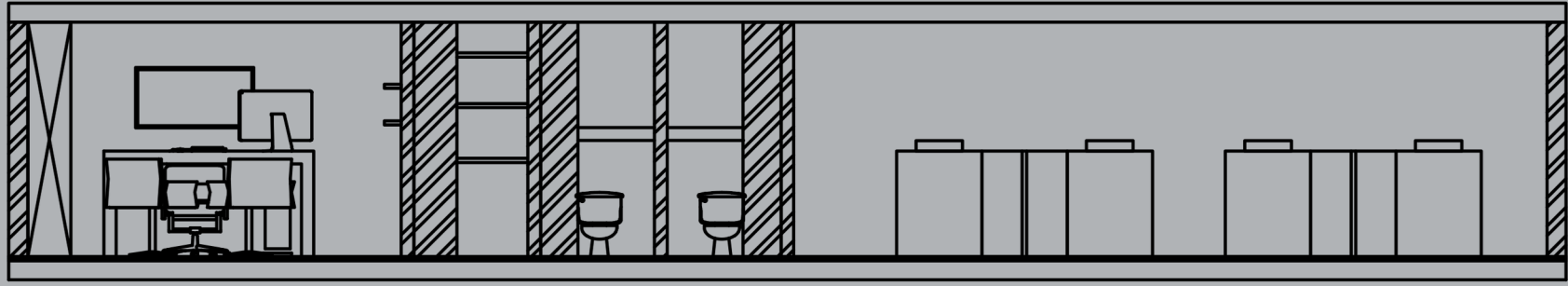


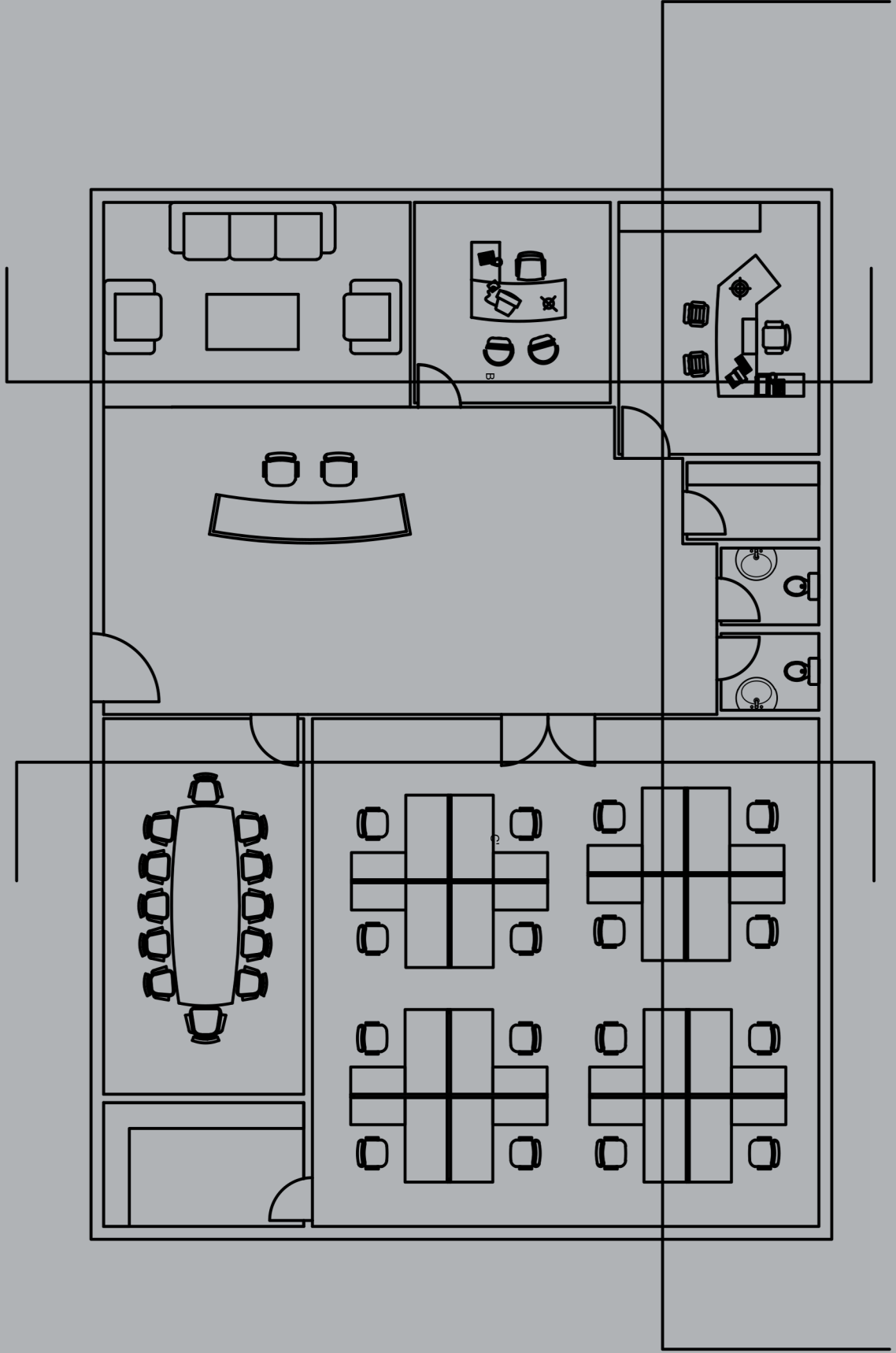
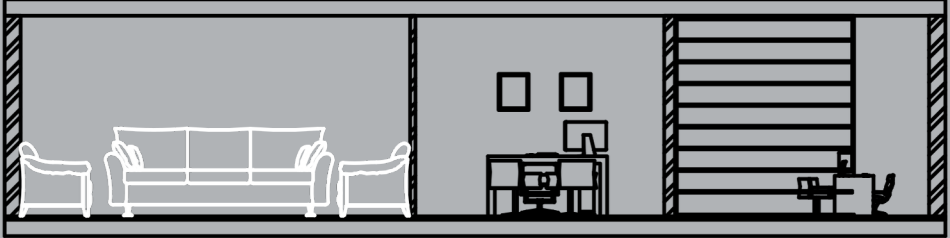
P
H
O
T
O
S
H
O
P
R
E
N
D
E
R



SECTIONAL ELEVATION





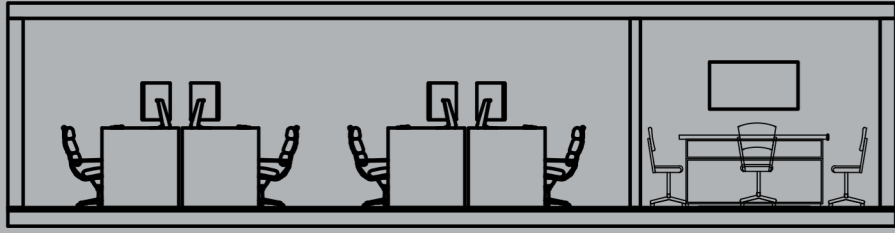
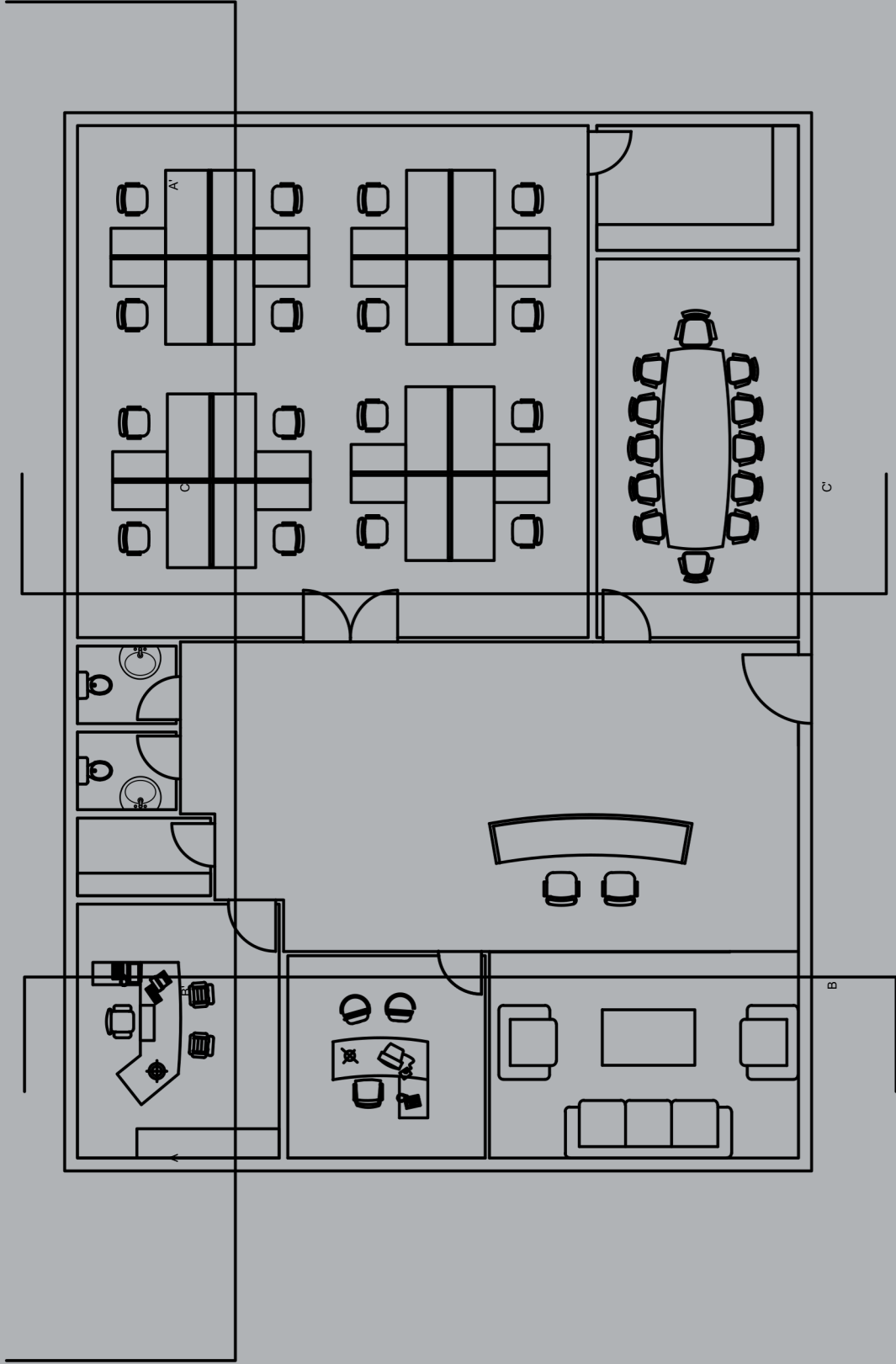
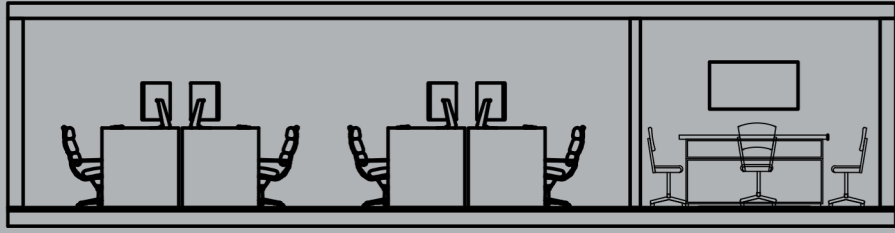


A

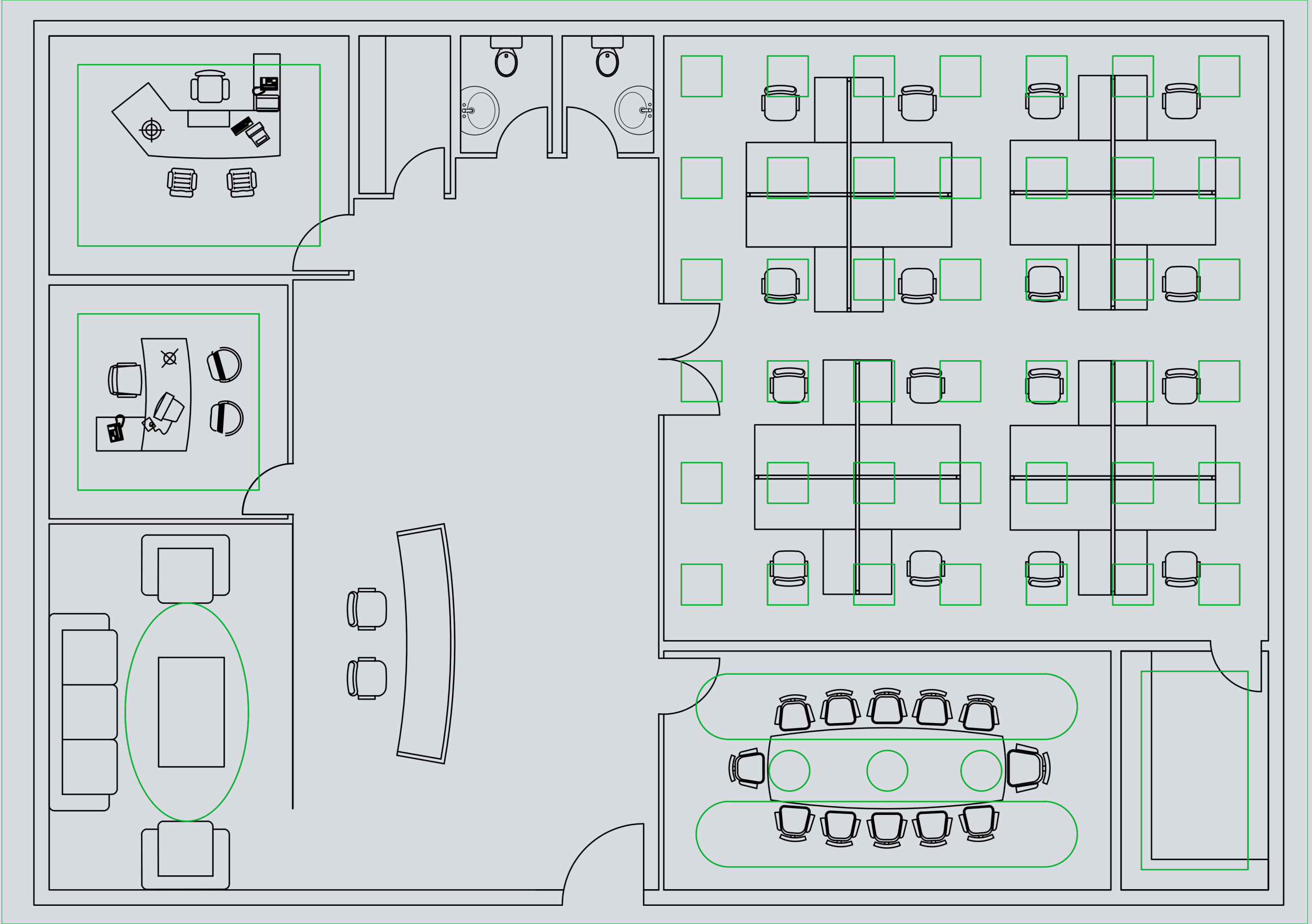
B

C

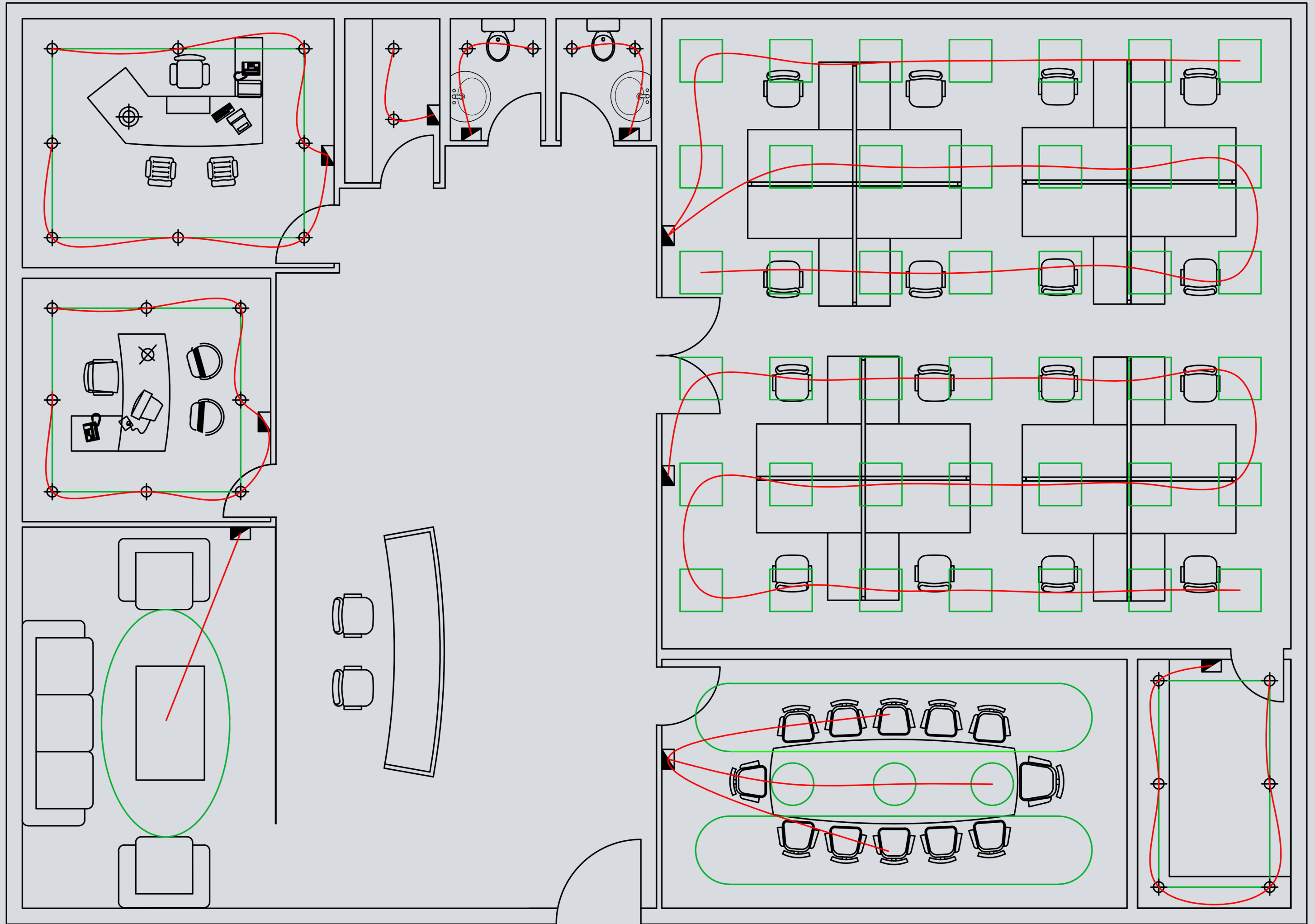
A



C
E
I
L
I
N
G
P
L
A
N

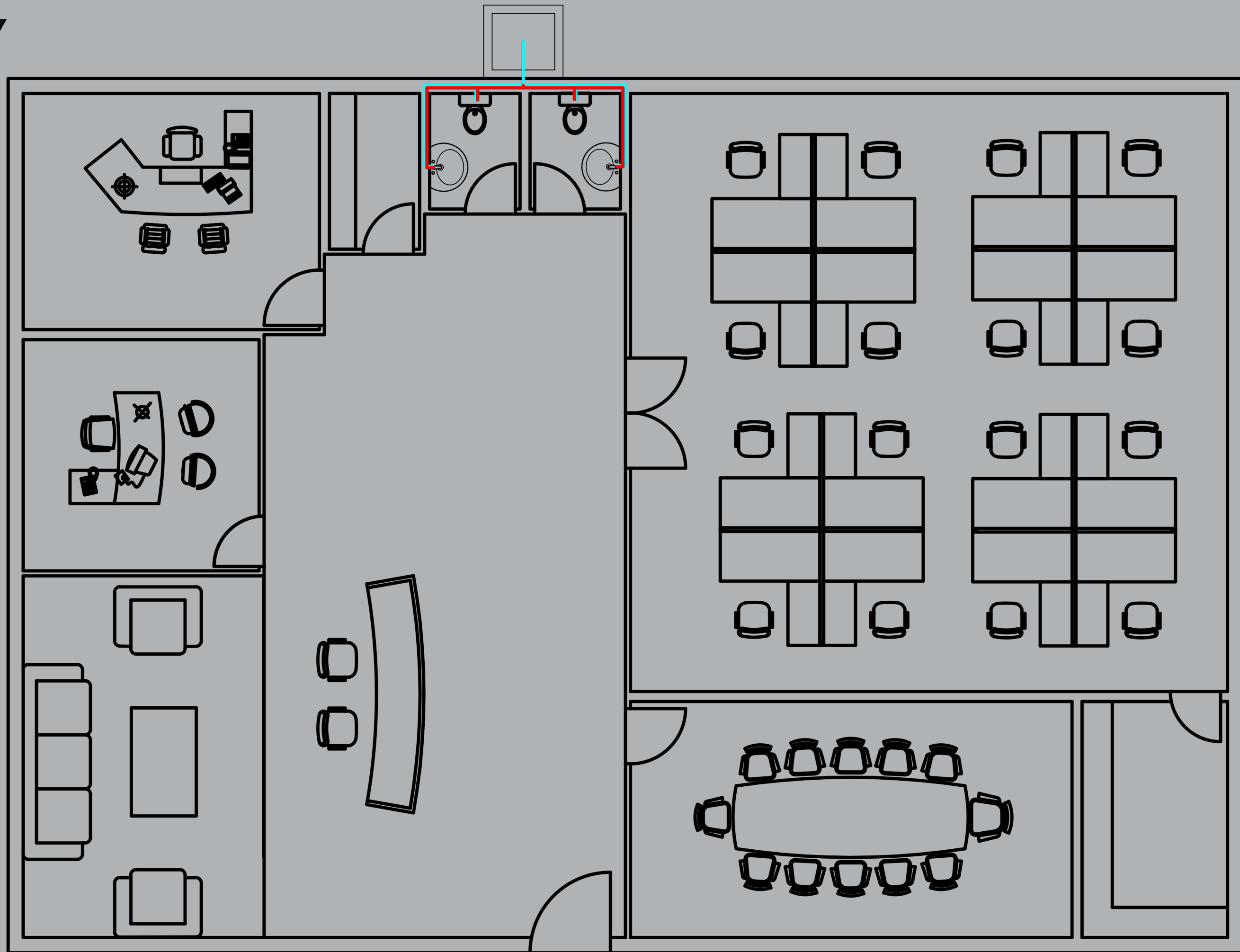


ELECTRICAL PLAN



P
L
U
M
B
I
N
G
P
L
A
N

SUPPLY



P
L
U
M
B
I
P
L
A
N

DRAINAGE





3D
Models



Rendering





Thank
YOU